

ZRSR2P1 Antibody



PACO46498

Product Information

Size:

50ug

Reactivity:

Human

Source:

Rabbit

Isotype:

IgG

Applications:

ELISA, IHC

Recommended dilutions:

ELISA:1:2000-1:10000, IHC:1:20-1:200

Protein Background:**Gene ID:**

ZRSR2P1

Uniprot

Q15695

Synonyms:

Putative U2 small nuclear ribonucleoprotein auxiliary factor 35 kDa subunit-related protein 1 (CCCH type zinc finger, RNA-binding motif and serine/arginine rich protein 1) (U2(RNU2) small nuclear RNA auxiliary factor 1-like 1), ZRSR2P1, U2AF1-RS1, U2AF1L1, U2AF1P, U2AF1RS1, U2AFBPL, ZRSR1

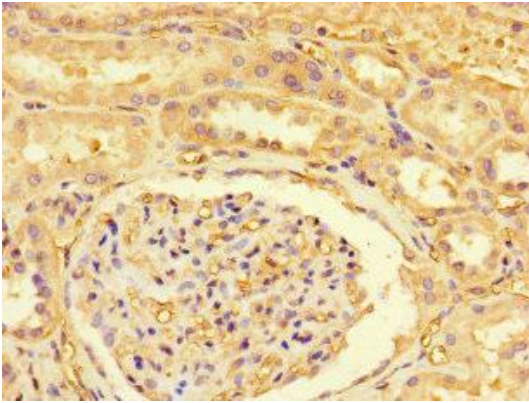
Immunogen:

Recombinant Human Putative U2 small nuclear ribonucleoprotein auxiliary factor 35 kDa subunit-related protein 1 protein (197-372AA).

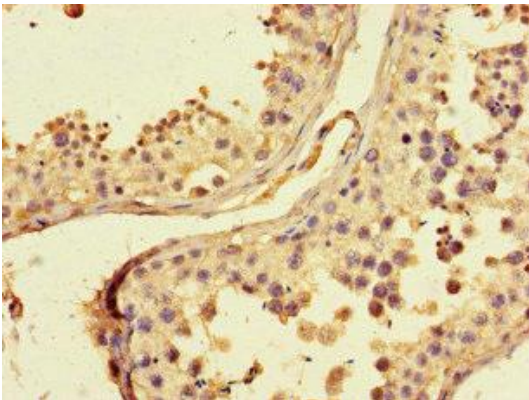
Storage:

Preservative: 0.03% Proclin 300. Constituents: 50% Glycerol, 0.01M PBS, PH 7.4

Product Images



Immunohistochemistry of paraffin-embedded human kidney tissue using PACO46498 at dilution of 1:100.



Immunohistochemistry of paraffin-embedded human testis tissue using PACO46498 at dilution of 1:100.