

# TIAM1 Antibody



PACO46494

---

## Product Information

**Size:**

50ug

**Reactivity:**

Human

**Source:**

Rabbit

**Isotype:**

IgG

**Applications:**

ELISA, IHC, IF

**Recommended dilutions:**

ELISA:1:2000-1:10000, IHC:1:20-1:200,  
IF:1:50-1:200

**Protein Background:**

Modulates the activity of RHO-like proteins and connects extracellular signals to cytoskeletal activities. Acts as a GDP-dissociation stimulator protein that stimulates the GDP-GTP exchange activity of RHO-like GTPases and activates them. Activates RAC1, CDC42, and to a lesser extent RHOA. Required for normal cell adhesion and cell migration.

**Gene ID:**

TIAM1

**Uniprot**

Q13009

**Synonyms:**

T-lymphoma invasion and metastasis-inducing protein 1 (TIAM-1), TIAM1

**Immunogen:**

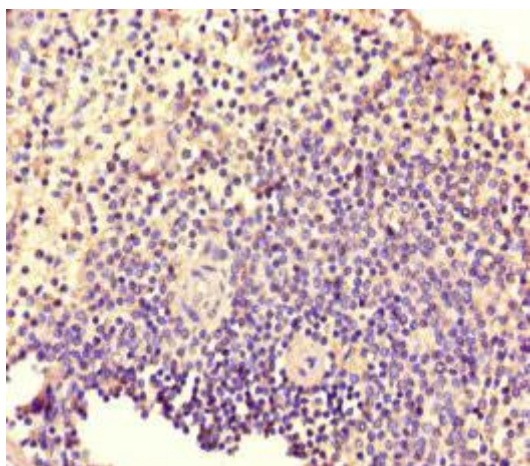
Recombinant Human T-lymphoma invasion and metastasis-inducing protein 1 protein (52-224AA).

**Storage:**

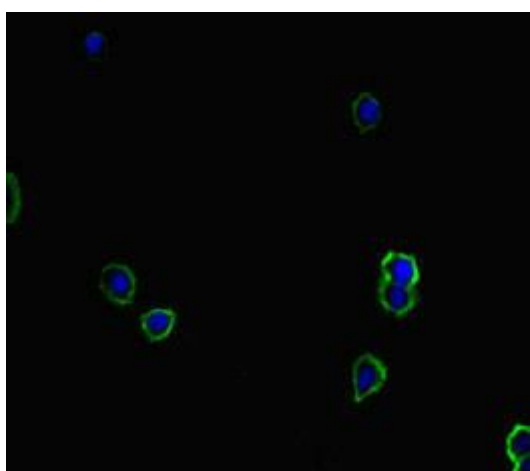
Preservative: 0.03% Proclin 300. Constituents: 50% Glycerol, 0.01M PBS, PH 7.4

## Product Images

---



Immunohistochemistry of paraffin-embedded human spleen tissue using PACO46494 at dilution of 1:100.



Immunofluorescent analysis of HepG2 cells using PACO46494 at dilution of 1:100 and Alexa Fluor 488-conjugated AffiniPure Goat Anti-Rabbit IgG(H+L).