

PACO46482

---

## Product Information

**Size:**

50ug

**Reactivity:**

Human

**Source:**

Rabbit

**Isotype:**

IgG

**Applications:**

ELISA, IHC

**Recommended dilutions:**

ELISA:1:2000-1:10000, IHC:1:20-1:200

**Protein Background:**

Interacts with LAR-interacting protein LIP.1.

**Gene ID:**

PTPRS

**Uniprot**

Q13332

**Synonyms:**

Receptor-type tyrosine-protein phosphatase S (R-PTP-S) (EC 3.1.3.48) (Receptor-type tyrosine-protein phosphatase sigma) (R-PTP-sigma), PTPRS

**Immunogen:**

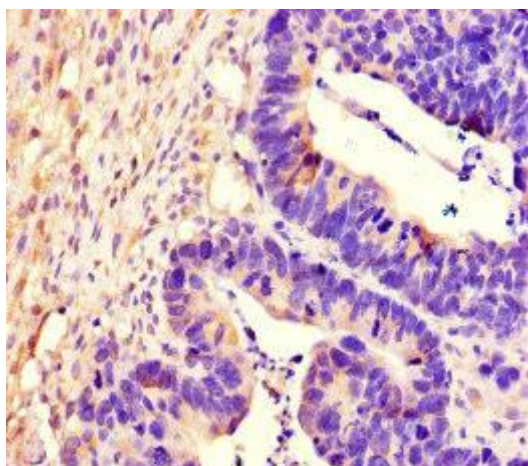
Recombinant Human Receptor-type tyrosine-protein phosphatase S protein (25-128AA).

**Storage:**

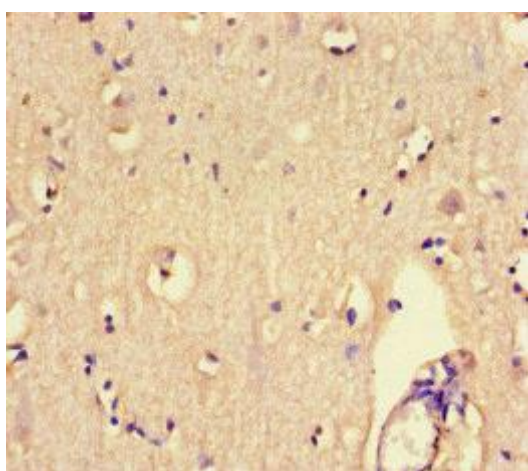
Preservative: 0.03% Proclin 300. Constituents: 50% Glycerol, 0.01M PBS, PH 7.4

## Product Images

---



Immunohistochemistry of paraffin-embedded human ovarian cancer using PACO46482 at dilution of 1:100.



Immunohistochemistry of paraffin-embedded human brain tissue using PACO46482 at dilution of 1:100.