

KDM1A Antibody



PACO46470

Product Information

Size:

50ug

Reactivity:

Human, Mouse

Source:

Rabbit

Isotype:

IgG

Applications:

ELISA, WB, IHC, IF

Recommended dilutions:

ELISA:1:2000-1:10000, WB:1:1000-1:5000,
IHC:1:20-1:200, IF:1:50-1:200

Protein Background:**Gene ID:**

KDM1A

Uniprot

O60341

Synonyms:

Lysine-specific histone demethylase 1A (EC 1) (BRAF35-HDAC complex protein BHC110) (Flavin-containing amine oxidase domain-containing protein 2), KDM1A, AOF2 KDM1 KIAA0601 LSD1

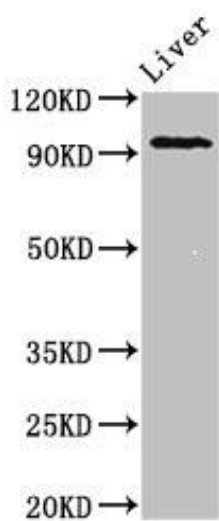
Immunogen:

Recombinant Human Lysine-specific histone demethylase 1A protein (100-150AA).

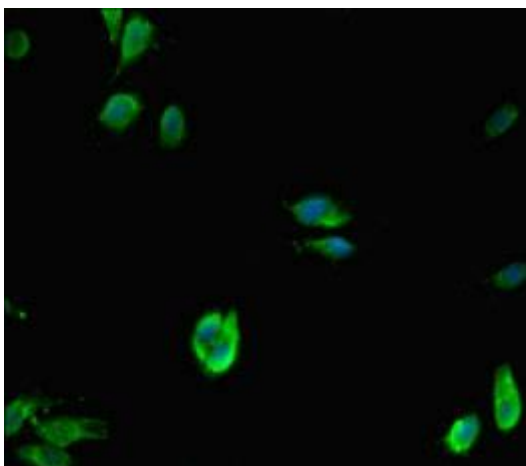
Storage:

Preservative: 0.03% Proclin 300. Constituents: 50% Glycerol, 0.01M PBS, PH 7.4

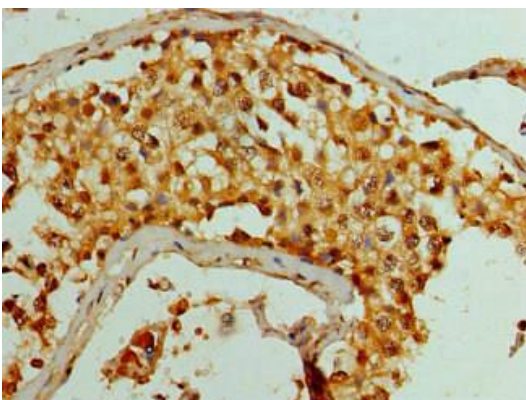
Product Images



Western Blot. Positive WB detected in: Mouse liver tissue. All lanes: KDM1A antibody at 2 μ g/ml. Secondary. Goat polyclonal to rabbit IgG at 1/50000 dilution. Predicted band size: 93, 96 kDa. Observed band size: 93 kDa.



Immunofluorescent analysis of HeLa cells using PACO46470 at dilution of 1:100 and Alexa Fluor 488-conjugated AffiniPure Goat Anti-Rabbit IgG(H+L).



Immunohistochemistry of paraffin-embedded human testis tissue using PACO46470 at dilution of 1:100.