

SMIM1 Antibody



PACO46462

Product Information

Size:

50ug

Reactivity:

Human

Source:

Rabbit

Isotype:

IgG

Applications:

ELISA, IHC, IF

Recommended dilutions:

ELISA:1:2000-1:10000, IHC:1:20-1:200,
IF:1:50-1:200

Protein Background:

Regulator of red blood cells formation.

Gene ID:

SMIM1

Uniprot

B2RUZ4

Synonyms:

Small integral membrane protein 1 (Vel blood group antigen), SMIM1

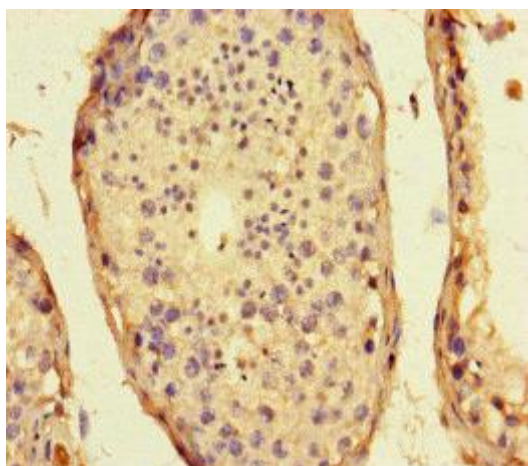
Immunogen:

Recombinant Human Small integral membrane protein 1 protein (1-46AA).

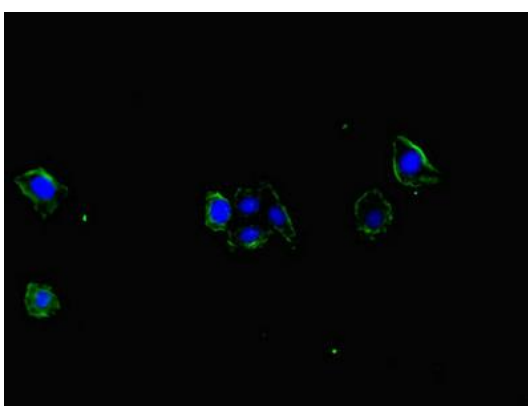
Storage:

Preservative: 0.03% Proclin 300. Constituents: 50% Glycerol, 0.01M PBS, PH 7.4

Product Images



Immunohistochemistry of paraffin-embedded human testis tissue using PACO46462 at dilution of 1:100.



Immunofluorescent analysis of HepG2 cells using PACO46462 at dilution of 1:100 and Alexa Fluor 488-conjugated AffiniPure Goat Anti-Rabbit IgG(H+L).