

PACO46342

Product Information

Size:

50ug

Reactivity:

Human, Mouse

Source:

Rabbit

Isotype:

IgG

Applications:

ELISA, WB, IHC

Recommended dilutions:

ELISA:1:2000-1:10000, WB:1:1000-1:5000,
IHC:1:20-1:200

Protein Background:

SRF is a transcription factor that binds to the serum response element (SRE), a short sequence of dyad symmetry located 300 bp to the 5' of the site of transcription initiation of some genes (such as FOS). Required for cardiac differentiation and maturation.

Gene ID:

SRF

Uniprot

P11831

Synonyms:

Serum response factor (SRF), SRF

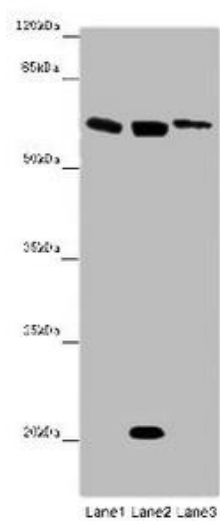
Immunogen:

Recombinant Human Serum response factor protein (57-269AA).

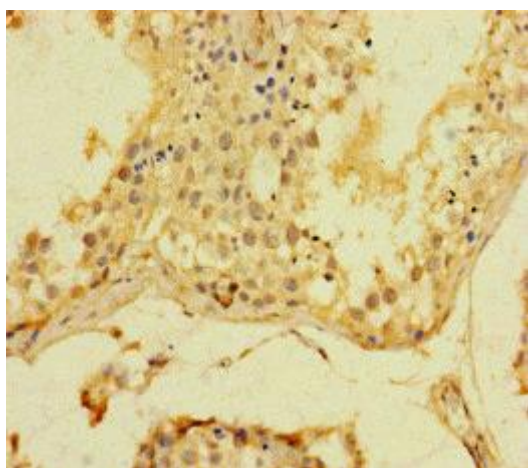
Storage:

Preservative: 0.03% Proclin 300. Constituents: 50% Glycerol, 0.01M PBS, PH 7.4

Product Images



Western blot. All lanes: SRF antibody at 12 $\mu\text{g/ml}$. Lane 1: Mouse heart tissue. Lane 2: NIH/3T3 whole cell lysate. Lane 3: MCF-7 whole cell lysate. Secondary: Goat polyclonal to rabbit IgG at 1/10000 dilution. Predicted band size: 52 kDa. Observed band size: 62, 21 kDa.



Immunohistochemistry of paraffin-embedded human testis tissue using PACO46342 at dilution of 1:100.