

PACO46326

Product Information

Size:

50ug

Reactivity:

Human, Mouse

Source:

Rabbit

Isotype:

IgG

Applications:

ELISA, WB, IHC, IF

Recommended dilutions:

ELISA:1:2000-1:10000, WB:1:2000-1:5000,
IHC:1:20-1:200, IF:1:50-1:200

Protein Background:

Receptor for ASNA1/TRC40-mediated insertion of tail-anchored (TA) proteins into the ER membrane.

Gene ID:

WRB

Uniprot

O00258

Synonyms:

Tail-anchored protein insertion receptor WRB (Congenital heart disease 5 protein) (Tryptophan-rich basic protein) (WRB), WRB, CHD5

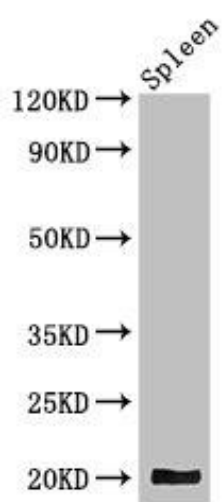
Immunogen:

Recombinant Human Tail-anchored protein insertion receptor WRB protein (38-99AA).

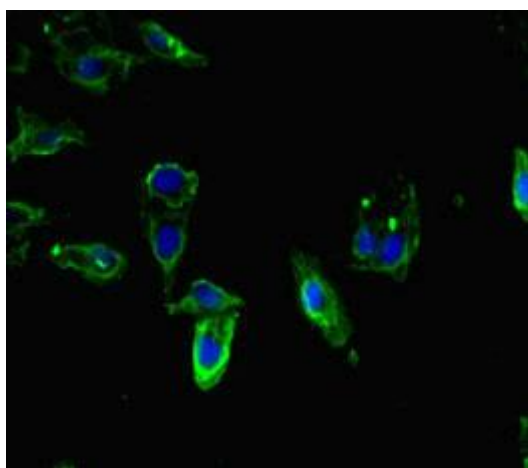
Storage:

Preservative: 0.03% Proclin 300. Constituents: 50% Glycerol, 0.01M PBS, PH 7.4

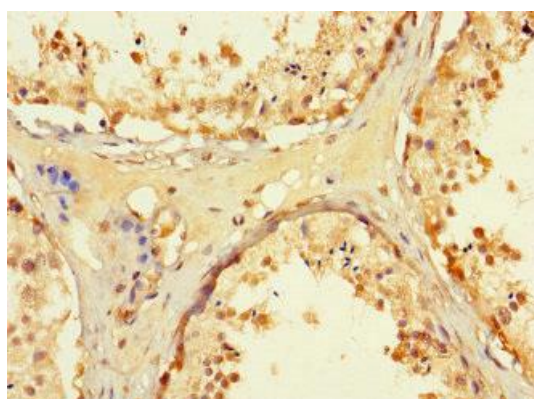
Product Images



Western Blot. Positive WB detected in: Mouse spleen tissue. All lanes: WRB antibody at 3.4ug/ml. Secondary. Goat polyclonal to rabbit IgG at 1/50000 dilution. Predicted band size: 20, 17 kDa. Observed band size: 20 kDa.



Immunofluorescent analysis of HeLa cells using PACO46326 at dilution of 1:100 and Alexa Fluor 488-conjugated AffiniPure Goat Anti-Rabbit IgG(H+L).



Immunohistochemistry of paraffin-embedded human testis tissue using PACO46326 at dilution of 1:100.