

SCG2 Antibody



PACO46194

Product Information

Size:

50ug

Reactivity:

Human

Source:

Rabbit

Isotype:

IgG

Applications:

ELISA, IHC, IF

Recommended dilutions:

ELISA:1:2000-1:10000, IHC:1:20-1:200,
IF:1:50-1:200

Protein Background:

Secretogranin-2 is a neuroendocrine secretory granule protein, which is the precursor for biologically active peptides.

Gene ID:

SCG2

Uniprot

P13521

Synonyms:

Secretogranin-2 (Chromogranin-C) (Secretogranin II) (SgII) [Cleaved into: Secretoneurin (SN); Manserin], SCG2, CHGC

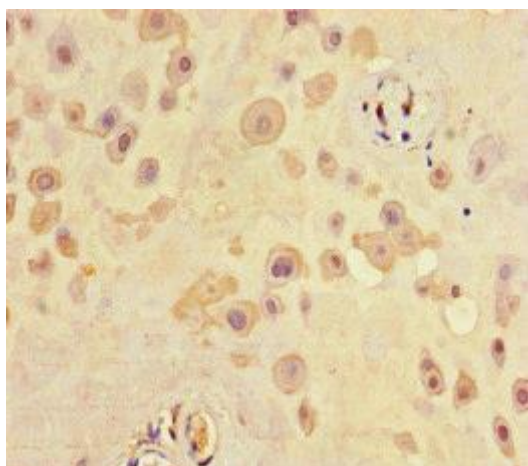
Immunogen:

Recombinant Human Secretogranin-2 protein (31-617AA).

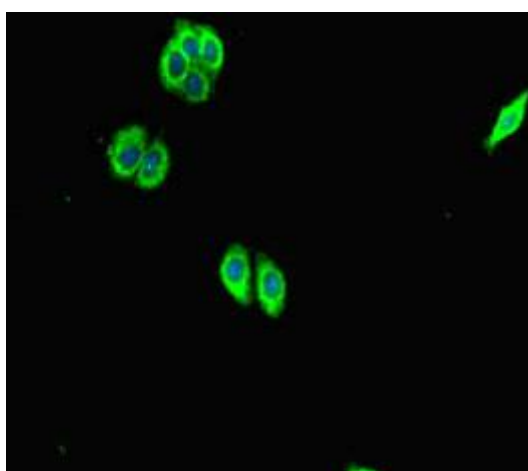
Storage:

Preservative: 0.03% Proclin 300. Constituents: 50% Glycerol, 0.01M PBS, PH 7.4

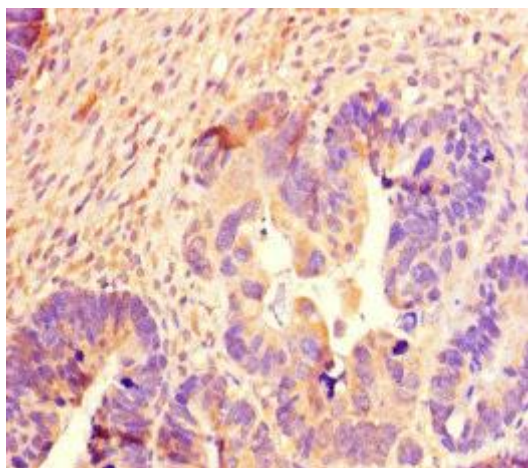
Product Images



Immunohistochemistry of paraffin-embedded human placenta tissue using PACO46194 at dilution of 1:100.



Immunofluorescent analysis of HepG2 cells using PACO46194 at dilution of 1:100 and Alexa Fluor 488-conjugated AffiniPure Goat Anti-Rabbit IgG(H+L).



Immunohistochemistry of paraffin-embedded human ovarian cancer using PACO46194 at dilution of 1:100.