

# PROM1 Antibody



PACO46138

---

## Product Information

**Size:**

50ug

**Reactivity:**

Human

**Source:**

Rabbit

**Isotype:**

IgG

**Applications:**

ELISA, WB, IHC

**Recommended dilutions:**

ELISA:1:2000-1:10000, WB:1:500-1:5000,  
IHC:1:1000-1:2000

**Protein Background:**

May play a role in cell differentiation, proliferation and apoptosis. Binds cholesterol in cholesterol-containing plasma membrane microdomains and may play a role in the organization of the apical plasma membrane in epithelial cells. During early retinal development acts as a key regulator of disk morphogenesis. Involved in regulation of MAPK and Akt signaling pathways. In neuroblastoma cells suppresses cell differentiation such as neurite outgrowth in a RET-dependent manner.

**Gene ID:**

PROM1

**Uniprot**

O43490

**Synonyms:**

Prominin-1 (Antigen AC133) (Prominin-like protein 1) (CD antigen CD133), PROM1, PROML1

**Immunogen:**

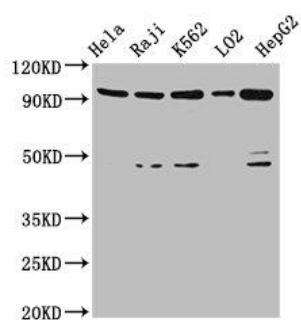
Recombinant Human Prominin-1 protein (508-792AA).

**Storage:**

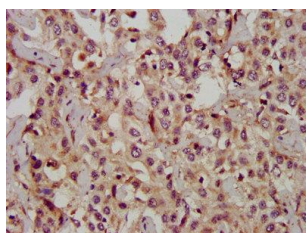
Preservative: 0.03% Proclin 300. Constituents: 50% Glycerol, 0.01M PBS, PH 7.4

## Product Images

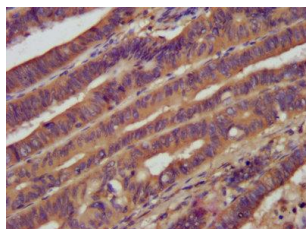
---



Western Blot. Positive WB detected in: HeLa whole cell lysate, Raji whole cell lysate, K562 whole cell lysate, LO2 whole cell lysate, HepG2 whole cell lysate. All lanes: PROM1 antibody at 4.8 $\mu$ g/ml. Secondary: Goat polyclonal to rabbit IgG at 1/50000 dilution. Predicted band size: 98, 97, 94, 93, 95 kDa. Observed band size: 98 kDa.



IHC image of PACO46138 diluted at 1:1200 and staining in paraffin-embedded human liver cancer performed on a Leica Bond<sup>TM</sup> system. After dewaxing and hydration, antigen retrieval was mediated by high pressure in a citrate buffer (pH 6.0). Section was blocked with 10% normal goat serum 30min at RT. Then primary antibody (1% BSA) was incubated at 4°C overnight. The primary is detected by a biotinylated secondary antibody and visualized using an HRP conjugated SP system.



IHC image of PACO46138 diluted at 1:1200 and staining in paraffin-embedded human colon cancer performed on a Leica Bond<sup>TM</sup> system. After dewaxing and hydration, antigen retrieval was mediated by high pressure in a citrate buffer (pH 6.0). Section was blocked with 10% normal goat serum 30min at RT. Then primary antibody (1% BSA) was incubated at 4°C overnight. The primary is detected by a biotinylated secondary antibody and visualized using an HRP conjugated SP system.