

KIR2DL3 Antibody



PACO45966

Product Information

Size:

50ug

Reactivity:

Human

Source:

Rabbit

Isotype:

IgG

Applications:

ELISA, IHC, IF

Recommended dilutions:

ELISA:1:2000-1:10000, IHC:1:20-1:200,
IF:1:50-1:200

Protein Background:

Receptor on natural killer (NK) cells for HLA-C alleles (HLA-Cw1, HLA-Cw3 and HLA-Cw7). Inhibits the activity of NK cells thus preventing cell lysis.

Gene ID:

KIR2DL3

Uniprot

P43628

Synonyms:

Killer cell immunoglobulin-like receptor 2DL3 (CD158 antigen-like family member B2) (KIR-023GB) (Killer inhibitory receptor cl 2-3) (MHC class I NK cell receptor) (NKAT2a) (NKAT2b) (Natural killer-associated transcript 2) (NKAT-2) (p58 natural killer cell receptor clone CL-6) (p58 NK receptor CL-6) (p58.2 MHC class-I-specific NK receptor) (CD antigen CD158b2), KIR2DL3, CD158B2 KIRCL23 NKAT2

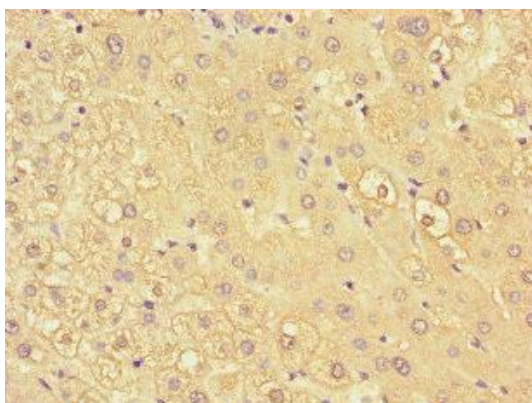
Immunogen:

Recombinant Human Killer cell immunoglobulin-like receptor 2DL3 protein (22-245AA).

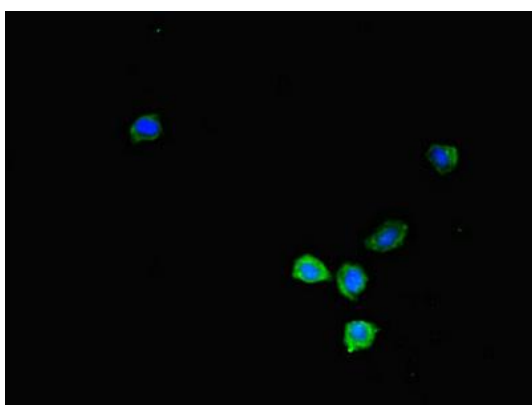
Storage:

Preservative: 0.03% Proclin 300. Constituents: 50% Glycerol, 0.01M PBS, PH 7.4

Product Images



Immunohistochemistry of paraffin-embedded human liver tissue using PACO45966 at dilution of 1:100.



Immunofluorescent analysis of HepG2 cells using PACO45966 at dilution of 1:100 and Alexa Fluor 488-conjugated AffiniPure Goat Anti-Rabbit IgG(H+L).