

IFITM5 Antibody



PACO45926

Product Information

Size:

50ug

Reactivity:

Human

Source:

Rabbit

Isotype:

IgG

Applications:

ELISA, IHC, IF

Recommended dilutions:

ELISA:1:2000-1:10000, IHC:1:20-1:200,
IF:1:50-1:200

Protein Background:

Required for normal bone mineralization.

Gene ID:

IFITM5

Uniprot

A6NNB3

Synonyms:

Interferon-induced transmembrane protein 5 (Bone-restricted interferon-induced transmembrane protein-like protein) (BRIL) (Dispanin subfamily A member 1) (DSPA1), IFITM5

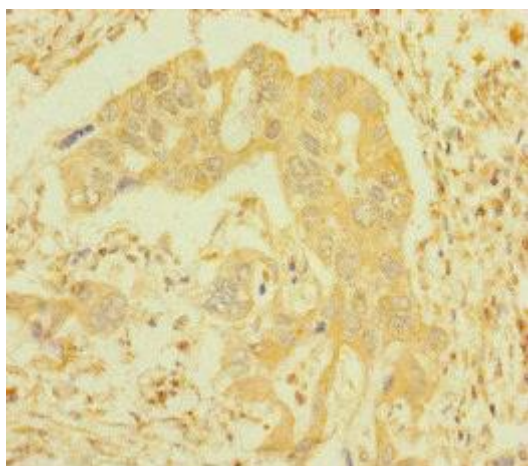
Immunogen:

Recombinant Human Interferon-induced transmembrane protein 5 protein (1-36AA).

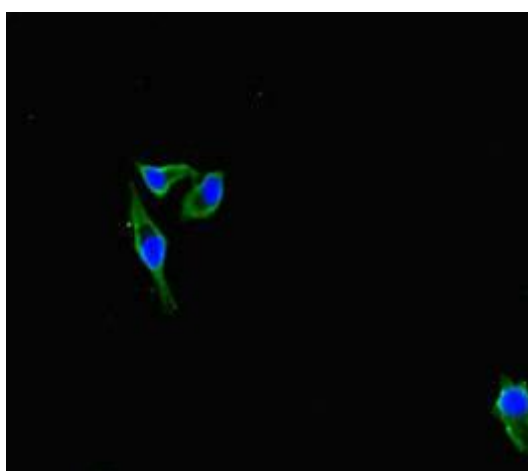
Storage:

Preservative: 0.03% Proclin 300. Constituents: 50% Glycerol, 0.01M PBS, PH 7.4

Product Images



Immunohistochemistry of paraffin-embedded human pancreatic cancer using PACO45926 at dilution of 1:100.



Immunofluorescent analysis of HeLa cells using PACO45926 at dilution of 1:100 and Alexa Fluor 488-conjugated AffiniPure Goat Anti-Rabbit IgG(H+L).