

GUCY1A1 Antibody



PACO45874

Product Information

Size:

50ug

Reactivity:

Human

Source:

Rabbit

Isotype:

IgG

Applications:

ELISA, IHC, IF

Recommended dilutions:

ELISA:1:2000-1:10000, IHC:1:20-1:200,
IF:1:50-1:200

Protein Background:

guanylate cyclase complex, soluble, plasma membrane, guanylate cyclase activity, receptor activity, blood circulation, cGMP biosynthetic process, nitric oxide mediated signal transduction.

Gene ID:

GUCY1A1

Uniprot

Q02108

Synonyms:

Guanylate cyclase soluble subunit alpha-1 (GCS-alpha-1) (EC 4.6.1.2) (Guanylate cyclase soluble subunit alpha-3) (GCS-alpha-3) (Soluble guanylate cyclase large subunit), GUCY1A1, GUC1A3 GUCSA3 GUCY1A3

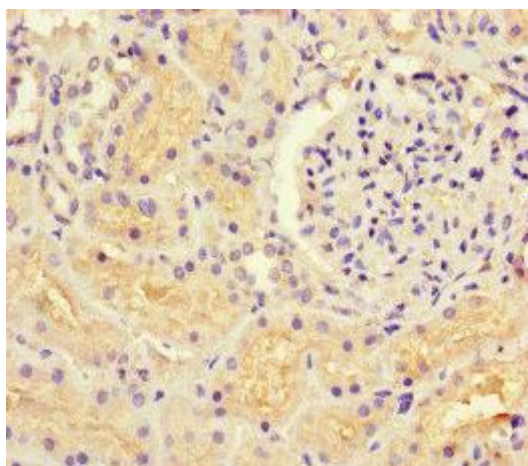
Immunogen:

Recombinant Human Guanylate cyclase soluble subunit alpha-1 protein (20-152AA).

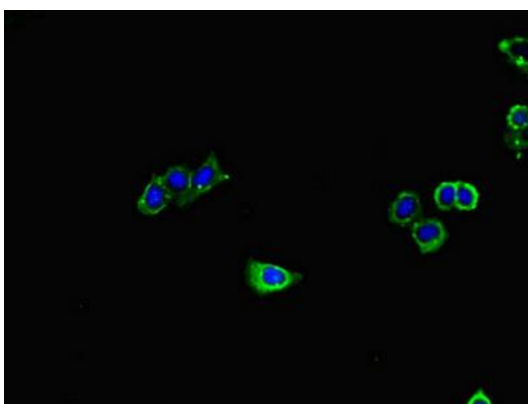
Storage:

Preservative: 0.03% Proclin 300. Constituents: 50% Glycerol, 0.01M PBS, PH 7.4

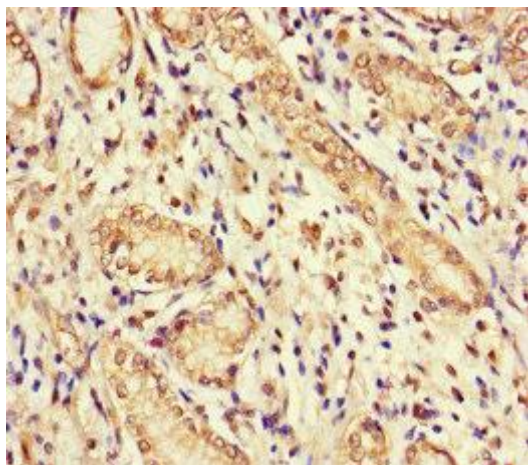
Product Images



Immunohistochemistry of paraffin-embedded human kidney tissue using PACO45874 at dilution of 1:100.



Immunofluorescent analysis of HepG2 cells using PACO45874 at dilution of 1:100 and Alexa Fluor 488-conjugated AffiniPure Goat Anti-Rabbit IgG(H+L).



Immunohistochemistry of paraffin-embedded human gastric cancer using PACO45874 at dilution of 1:100.