

GRID2IP Antibody



PACO45866

Product Information

Size:

50ug

Reactivity:

Human

Source:

Rabbit

Isotype:

IgG

Applications:

ELISA, IHC, IF

Recommended dilutions:

ELISA:1:2000-1:10000, IHC:1:20-1:200,
IF:1:50-1:200

Protein Background:

Postsynaptic scaffolding protein at the parallel fiber-Purkinje cell synapse, where it may serve to link GRID2 with actin cytoskeleton and various signaling molecules.

Gene ID:

GRID2IP

Uniprot

A4D2P6

Synonyms:

Delphilin (Glutamate receptor, ionotropic, delta 2-interacting protein 1), GRID2IP

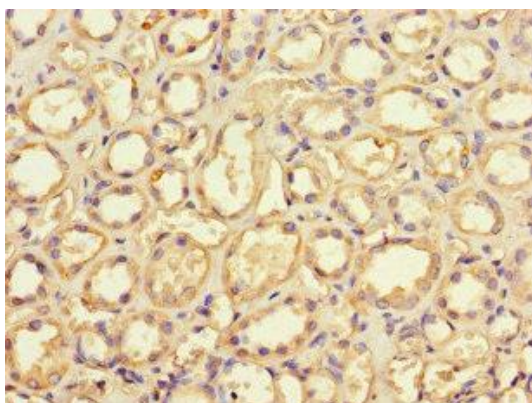
Immunogen:

Recombinant Human Delphilin protein (35-156AA).

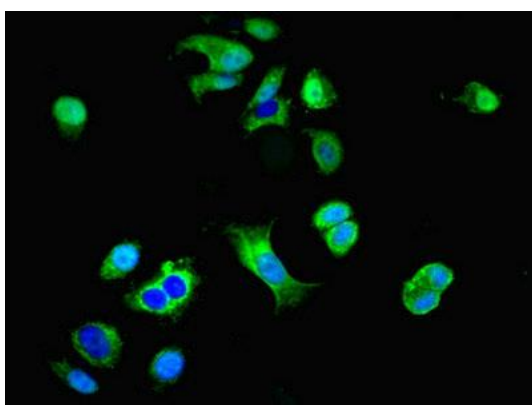
Storage:

Preservative: 0.03% Proclin 300. Constituents: 50% Glycerol, 0.01M PBS, PH 7.4

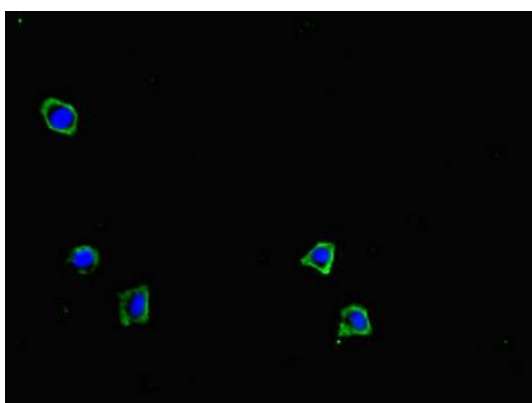
Product Images



Immunohistochemistry of paraffin-embedded human kidney tissue using PACO45866 at dilution of 1:100.



Immunofluorescent analysis of MCF-7 cells using PACO45866 at dilution of 1:100 and Alexa Fluor 488-conjugated AffiniPure Goat Anti-Rabbit IgG(H+L).



Immunofluorescent analysis of HepG2 cells using PACO45866 at dilution of 1:100 and Alexa Fluor 488-conjugated AffiniPure Goat Anti-Rabbit IgG(H+L).