

ELK1 Antibody



PACO45798

Product Information

Size:

50ug

Reactivity:

Human, Mouse

Source:

Rabbit

Isotype:

IgG

Applications:

ELISA, WB, IHC

Recommended dilutions:

ELISA:1:2000-1:10000, WB:1:500-1:5000,
IHC:1:20-1:200

Protein Background:

Transcription factor that binds to purine-rich DNA sequences. Forms a ternary complex with SRF and the ETS and SRF motifs of the serum response element (SRE) on the promoter region of immediate early genes such as FOS and IER2. Induces target gene transcription upon JNK-signaling pathway stimulation.

Gene ID:

ELK1

Uniprot

P19419

Synonyms:

ETS domain-containing protein Elk-1, ELK1

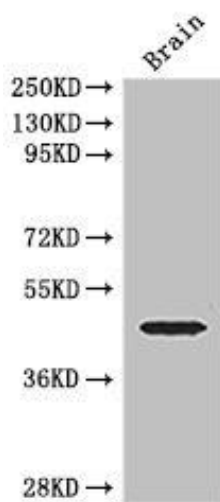
Immunogen:

Recombinant Human ETS domain-containing protein Elk-1 protein (247-403AA).

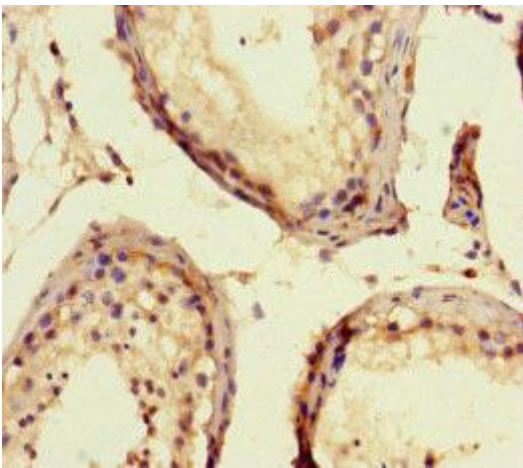
Storage:

Preservative: 0.03% Proclin 300. Constituents: 50% Glycerol, 0.01M PBS, PH 7.4

Product Images



Western Blot. Positive WB detected in: Mouse brain tissue. All lanes: ELK1 antibody at 3 μ g/ml. Secondary. Goat polyclonal to rabbit IgG at 1/50000 dilution. Predicted band size: 45, 12 kDa. Observed band size: 45 kDa.



Immunohistochemistry of paraffin-embedded human testis tissue using PACO45798 at dilution of 1:100.