

ECEL1 Antibody



PACO45786

Product Information

Size:

50ug

Reactivity:

Human

Source:

Rabbit

Isotype:

IgG

Applications:

ELISA, IHC, IF

Recommended dilutions:

ELISA:1:2000-1:10000, IHC:1:20-1:200,
IF:1:50-1:200

Protein Background:

May contribute to the degradation of peptide hormones and be involved in the inactivation of neuronal peptides.

Gene ID:

ECEL1

Uniprot

O95672

Synonyms:

Endothelin-converting enzyme-like 1 (EC 3.4.24. -) (Xce protein), ECEL1, XCE

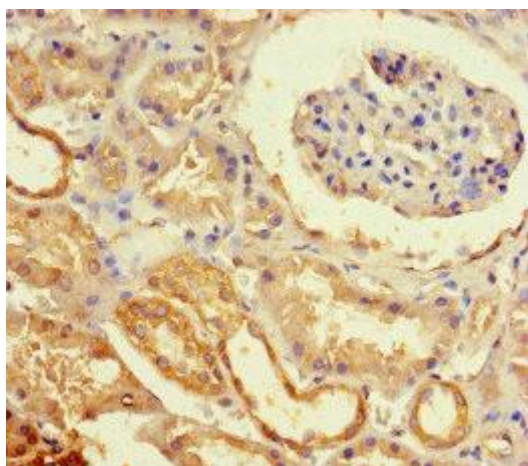
Immunogen:

Recombinant Human Endothelin-converting enzyme-like 1 protein (425-775AA).

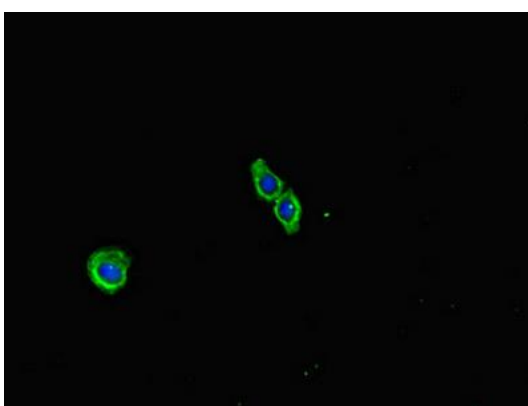
Storage:

Preservative: 0.03% Proclin 300. Constituents: 50% Glycerol, 0.01M PBS, PH 7.4

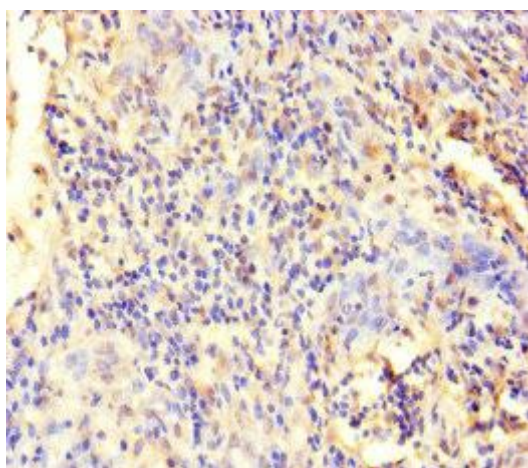
Product Images



Immunohistochemistry of paraffin-embedded human kidney tissue using PACO45786 at dilution of 1:100.



Immunofluorescent analysis of HepG2 cells using PACO45786 at dilution of 1:100 and Alexa Fluor 488-conjugated AffiniPure Goat Anti-Rabbit IgG(H+L).



Immunohistochemistry of paraffin-embedded human cervical cancer using PACO45786 at dilution of 1:100.