

PACO45726

---

## Product Information

**Size:**

50ug

**Reactivity:**

Human

**Source:**

Rabbit

**Isotype:**

IgG

**Applications:**

ELISA, IHC, IF

**Recommended dilutions:**

ELISA:1:2000-1:10000, IHC:1:20-1:200,  
IF:1:50-1:200

**Protein Background:****Gene ID:**

CDK7

**Uniprot**

P50613

**Synonyms:**

Cyclin-dependent kinase 7 (EC 2.7.11.22) (EC 2.7.11.23) (39 kDa protein kinase) (p39 Mo15) (CDK-activating kinase 1) (Cell division protein kinase 7) (Serine/threonine-protein kinase 1) (TFIIH basal transcription factor complex kinase subunit), CDK7, CAK CAK1 CDKN7 MO15 STK1

**Immunogen:**

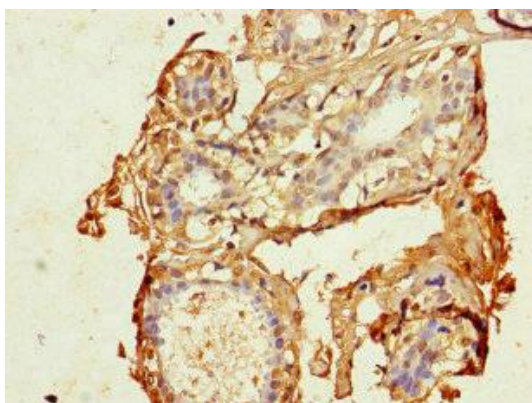
Recombinant Human Cyclin-dependent kinase 7 protein (212-341AA).

**Storage:**

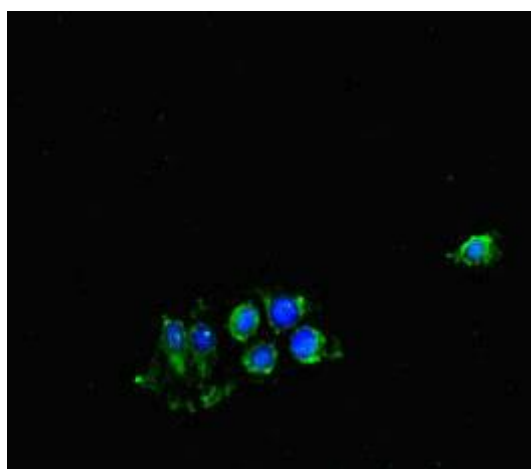
Preservative: 0.03% Proclin 300. Constituents: 50% Glycerol, 0.01M PBS, PH 7.4

## Product Images

---



Immunohistochemistry of paraffin-embedded human breast cancer using PACO45726 at dilution of 1:100.



Immunofluorescent analysis of HeLa cells using PACO45726 at dilution of 1:100 and Alexa Fluor 488-conjugated AffiniPure Goat Anti-Rabbit IgG(H+L).