

Product Information

Size:

50ug

Reactivity:

Human

Source:

Rabbit

Isotype:

IgG

Applications:

ELISA, IF

Recommended dilutions:

ELISA:1:2000-1:10000, IF:1:50-1:200

Protein Background:

Required in cooperation with CD79A for initiation of the signal transduction cascade activated by the B-cell antigen receptor complex (BCR) which leads to internalization of the complex, trafficking to late endosomes and antigen presentation. Enhances phosphorylation of CD79A, possibly by recruiting kinases which phosphorylate CD79A or by recruiting proteins which bind to CD79A and protect it from dephosphorylation.

Gene ID:

CD79B

Uniprot

P40259

Synonyms:

B-cell antigen receptor complex-associated protein beta chain (B-cell-specific glycoprotein B29) (Ig-beta) (Immunoglobulin-associated B29 protein) (CD antigen CD79b), CD79B, B29 IGB

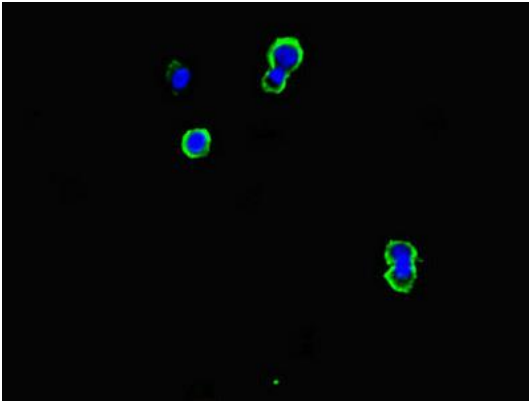
Immunogen:

Recombinant Human B-cell antigen receptor complex-associated protein β chain protein (29-159AA).

Storage:

Preservative: 0.03% Proclin 300. Constituents: 50% Glycerol, 0.01M PBS, PH 7.4

Product Images



Immunofluorescent analysis of MCF-7 cells using PACO45718 at dilution of 1:100 and Alexa Fluor 488-conjugated AffiniPure Goat Anti-Rabbit IgG(H+L).