

PACO45710

---

## Product Information

**Size:**

50ug

**Reactivity:**

Human, Mouse

**Source:**

Rabbit

**Isotype:**

IgG

**Applications:**

ELISA, WB, IHC, IF

**Recommended dilutions:**

ELISA:1:2000-1:10000, WB:1:500-1:5000,  
IHC:1:20-1:200, IF:1:50-1:200

**Protein Background:**

Molecular calcium-binding chaperone promoting folding, oligomeric assembly and quality control in the ER via the calreticulin/calnexin cycle. This lectin may interact transiently with almost all of the monoglucosylated glycoproteins that are synthesized in the ER.

**Gene ID:**

CALR

**Uniprot**

P27797

**Synonyms:**

Calreticulin (CRP55) (Calregulin) (Endoplasmic reticulum resident protein 60) (ERp60) (HACBP) (grp60), CALR, CRTC

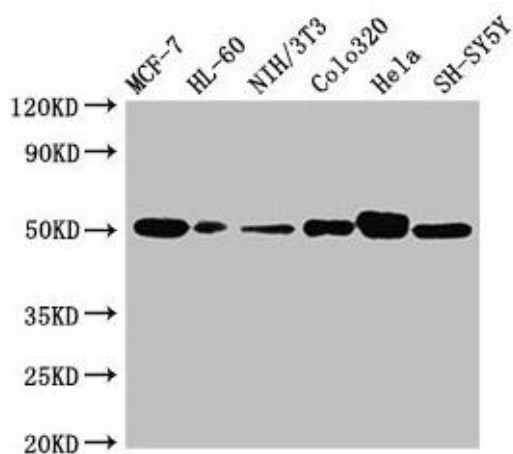
**Immunogen:**

Recombinant Human Calreticulin protein (18-417AA).

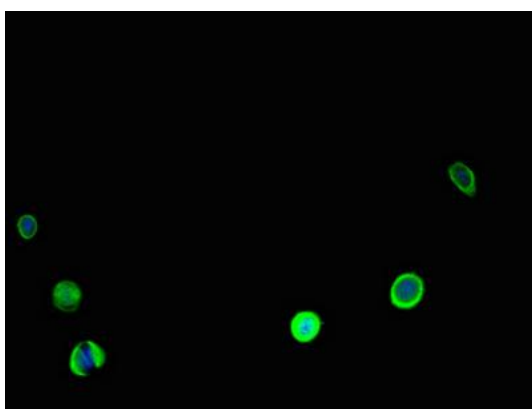
**Storage:**

Preservative: 0.03% Proclin 300. Constituents: 50% Glycerol, 0.01M PBS, PH 7.4

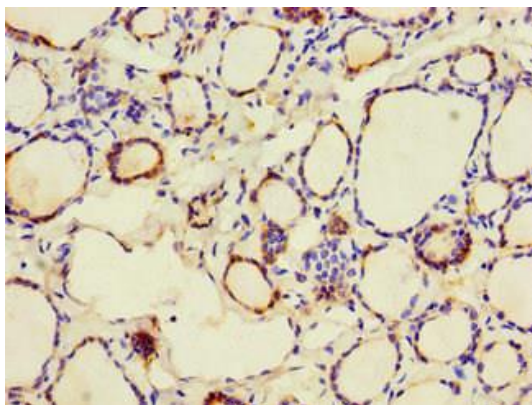
## Product Images



Western Blot. Positive WB detected in: MCF-7 whole cell lysate, HL60 whole cell lysate, NIH/3T3 whole cell lysate, Colo320 whole cell lysate, HeLa whole cell lysate, SH-SY5Y whole cell lysate. All lanes: CALR antibody at 2 $\mu$ g/ml. Secondary. Goat polyclonal to rabbit IgG at 1/10000 dilution. Predicted band size: 49 kDa. Observed band size: 49 kDa.



Immunofluorescent analysis of MCF-7 cells using PACO45710 at dilution of 1:100 and Alexa Fluor 488-conjugated AffiniPure Goat Anti-Rabbit IgG(H+L).



Immunohistochemistry of paraffin-embedded human thyroid tissue using PACO45710 at dilution of 1:100.