

## Product Information

**Size:**

50ug

**Reactivity:**

Human

**Source:**

Rabbit

**Isotype:**

IgG

**Applications:**

ELISA, IHC, IF, IP

**Recommended dilutions:**

ELISA:1:2000-1:10000, IHC:1:20-1:200,  
IF:1:50-1:500, IP:1:200-1:2000

**Protein Background:**

Essential component of the mitotic checkpoint. Required for normal mitosis progression. The mitotic checkpoint delays anaphase until all chromosomes are properly attached to the mitotic spindle. One of its checkpoint functions is to inhibit the activity of the anaphase-promoting complex/cyclosome (APC/C) by blocking the binding of CDC20 to APC/C, independently of its kinase activity. The other is to monitor kinetochore activities that depend on the kinetochore motor CENPE. Required for kinetochore localization of CENPE. Negatively regulates PLK1 activity in interphase cells and suppresses centrosome amplification. Also implicated in triggering apoptosis in polyploid cells that exit aberrantly from mitotic arrest. May play a role for tumor suppression.

**Gene ID:**

BUB1B

**Uniprot**

O60566

**Synonyms:**

Mitotic checkpoint serine/threonine-protein kinase BUB1 beta (EC 2.7.11.1) (MAD3/BUB1-related protein kinase) (hBUBR1) (Mitotic checkpoint kinase MAD3L) (Protein SSK1), BUB1B, BUBR1 MAD3L SSK1

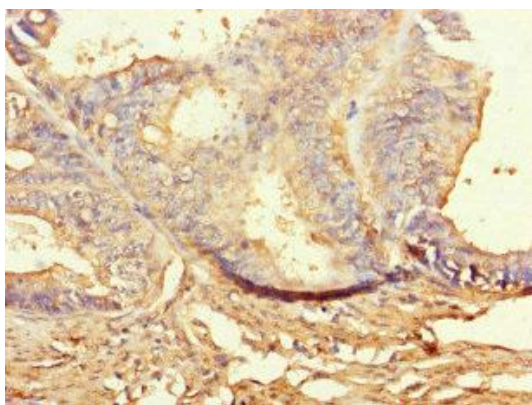
**Immunogen:**

Recombinant Human Mitotic checkpoint serine/threonine-protein kinase BUB1 &beta; protein (230-394AA).

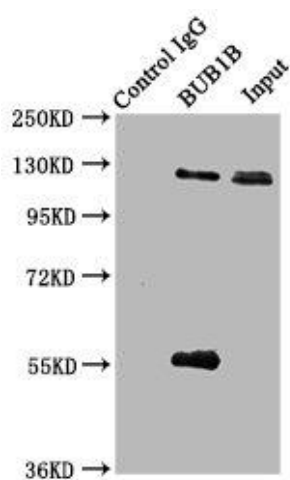
**Storage:**

Preservative: 0.03% Proclin 300. Constituents: 50% Glycerol, 0.01M PBS, PH 7.4

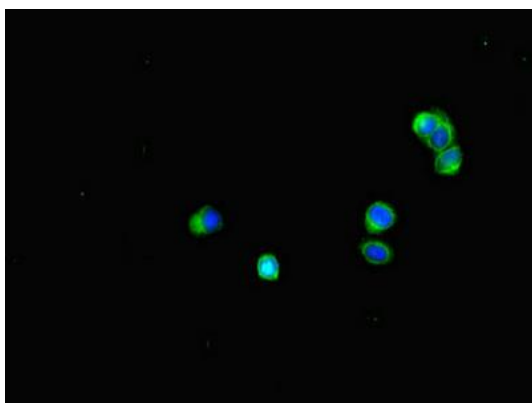
## Product Images



Immunohistochemistry of paraffin-embedded human endometrial cancer using PACO45702 at dilution of 1:100.



Immunoprecipitating BUB1B in JK whole cell lysate . Lane 1: Rabbit control IgG (1 $\mu$ g) instead of PACO45702 in Jurkat whole cell lysate. For western blotting, a HRP-conjugated Protein G antibody was used as the secondary antibody (1/2000). Lane 2: PACO45702 (6 $\mu$ g) + JK whole cell lysate (500 $\mu$ g). Lane 3: JK whole cell lysate (10 $\mu$ g).



Immunofluorescent analysis of HepG2 cells using PACO45702 at dilution of 1:100 and Alexa Fluor 488-conjugated AffiniPure Goat Anti-Rabbit IgG(H+L).