

SCFD1 Antibody



PACO45625

Product Information

Size:

50ul

Reactivity:

Human, Mouse

Source:

Rabbit

Isotype:

IgG

Applications:

ELISA, WB, IHC

Recommended dilutions:

ELISA:1:2000-1:10000, WB:1:1000-1:5000,
IHC:1:20-1:200

Protein Background:

Plays a role in SNARE-pin assembly and Golgi-to-ER retrograde transport via its interaction with COG4. Involved in vesicular transport between the endoplasmic reticulum and the Golgi.

Gene ID:

SCFD1

Uniprot

Q8WVM8

Synonyms:

Sec1 family domain-containing protein 1 (SLY1 homolog) (Sly1p) (Syntaxin-binding protein 1-like 2), SCFD1, C14orf163 KIAA0917 STXBP1L2

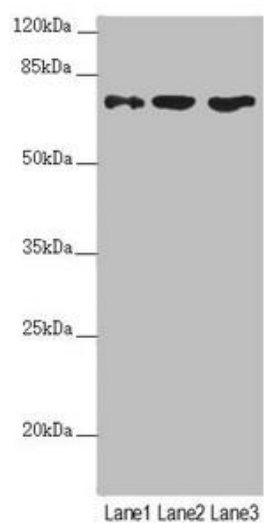
Immunogen:

Recombinant Human Sec1 family domain-containing protein 1 protein (373-642AA).

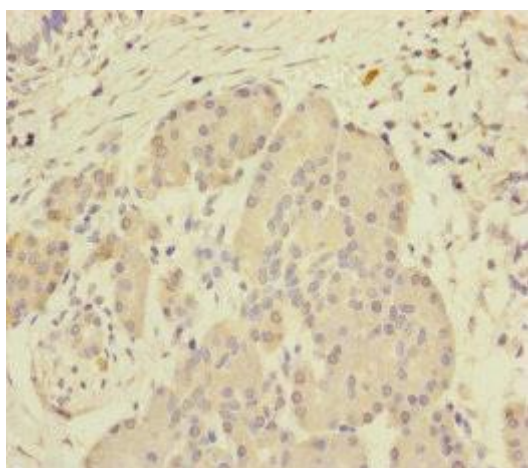
Storage:

PBS with 0.02% sodium azide, 50% glycerol, pH7.3.

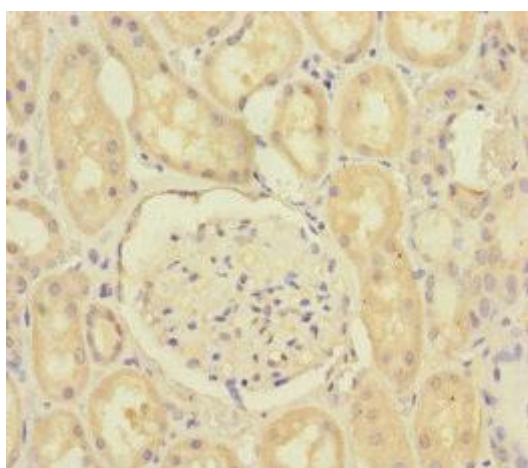
Product Images



Western blot. All lanes: SCFD1 antibody at 4.48 μ g/ml. Lane 1: Mouse liver tissue. Lane 2: Hela whole cell lysate. Lane 3: A549 whole cell lysate. Secondary: Goat polyclonal to rabbit IgG at 1/10000 dilution. Predicted band size: 73, 63, 66 kDa. Observed band size: 73 kDa.



Immunohistochemistry of paraffin-embedded human pancreatic tissue using PACO45625 at dilution of 1:100.



Immunohistochemistry of paraffin-embedded human kidney tissue using PACO45625 at dilution of 1:100.