

Product Information

Size:

50ul

Reactivity:

Human

Source:

Rabbit

Isotype:

IgG

Applications:

ELISA, WB, IHC

Recommended dilutions:

ELISA:1:2000-1:10000, WB:1:1000-1:5000,
IHC:1:20-1:200

Protein Background:

Splice factor that binds to the single-stranded 3'AG at the exon/intron border and promotes its utilization in the second catalytic step. Involved in the regulation of alternative splicing and the utilization of cryptic splice sites. Promotes the utilization of a cryptic splice site created by the beta-110 mutation in the HBB gene. The resulting frameshift leads to sickle cell anemia.

Gene ID:

RBM17

Uniprot

Q96I25

Synonyms:

Splicing factor 45 (45 kDa-splicing factor) (RNA-binding motif protein 17), RBM17, SPF45

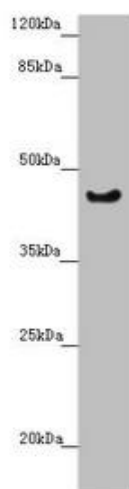
Immunogen:

Recombinant Human Splicing factor 45 protein (1-240AA).

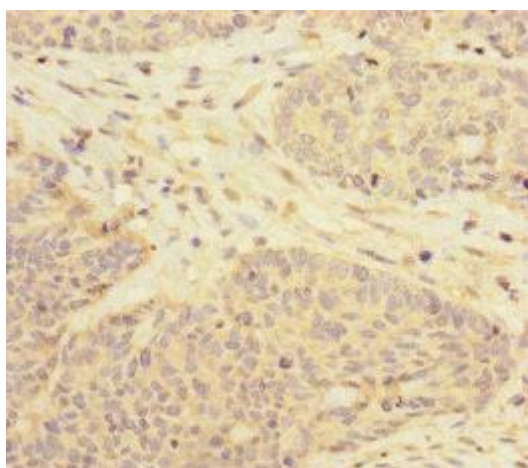
Storage:

PBS with 0.02% sodium azide, 50% glycerol, pH7.3.

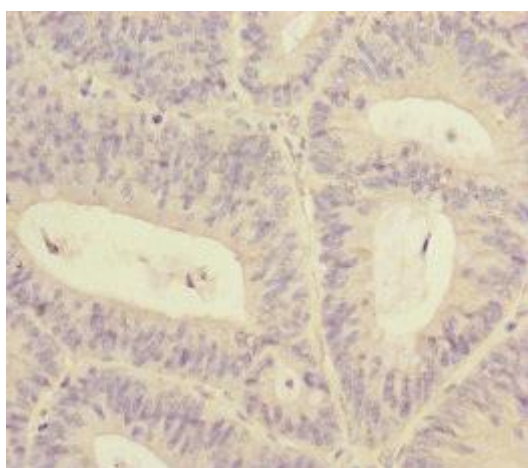
Product Images



Western blot. All lanes: RBM17 antibody at 2.35 μ g/ml + U251 whole cell lysate. Secondary. Goat polyclonal to rabbit IgG at 1/10000 dilution. Predicted band size: 45 kDa. Observed band size: 45 kDa.



Immunohistochemistry of paraffin-embedded human ovarian cancer using PACO45618 at dilution of 1:100.



Immunohistochemistry of paraffin-embedded human colon cancer using PACO45618 at dilution of 1:100.