

# MTO1 Antibody



PACO45608

---

## Product Information

**Size:**

50ul

**Reactivity:**

Human, Rat

**Source:**

Rabbit

**Isotype:**

IgG

**Applications:**

ELISA, WB, IHC

**Recommended dilutions:**

ELISA:1:2000-1:10000, WB:1:1000-1:5000,  
IHC:1:20-1:200

**Protein Background:**

Involved in the 5-carboxymethylaminomethyl modification (mnm(5)s(2)U34) of the wobble uridine base in mitochondrial tRNAs.

**Gene ID:**

MTO1

**Uniprot**

Q9Y2Z2

**Synonyms:**

Protein MTO1 homolog, mitochondrial, MTO1

**Immunogen:**

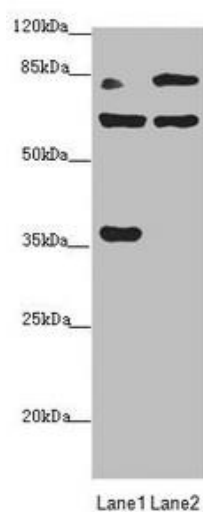
Recombinant Human Protein MTO1 homolog, mitochondrial protein (420-680AA).

**Storage:**

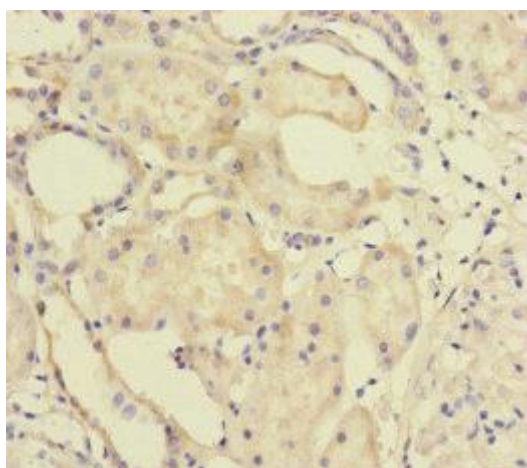
PBS with 0.02% sodium azide, 50% glycerol, pH7.3.

## Product Images

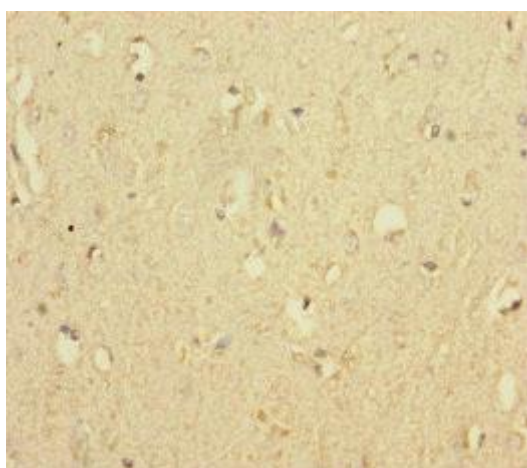
---



Western blot. All lanes: MTO1 antibody at 2.25 $\mu$ g/ml. Lane 1: Rat heart tissue. Lane 2: Jurkat whole cell lysate. Secondary: Goat polyclonal to rabbit IgG at 1/10000 dilution. Predicted band size: 80, 67, 35, 78, 73, 82 kDa. Observed band size: 80, 67, 35 kDa.



Immunohistochemistry of paraffin-embedded human kidney tissue using PACO45608 at dilution of 1:100.



Immunohistochemistry of paraffin-embedded human brain tissue using PACO45608 at dilution of 1:100.