

PACO45602

Product Information

Size:

50ul

Reactivity:

Human

Source:

Rabbit

Isotype:

IgG

Applications:

ELISA, IHC

Recommended dilutions:

ELISA:1:2000-1:10000, IHC:1:20-1:200

Protein Background:

Minus-end microtubule-dependent motor protein. Involved in apically targeted transport. Required for zonula adherens maintenance.

Gene ID:

KIFC3

Uniprot

Q9BVG8

Synonyms:

Kinesin-like protein KIFC3, KIFC3

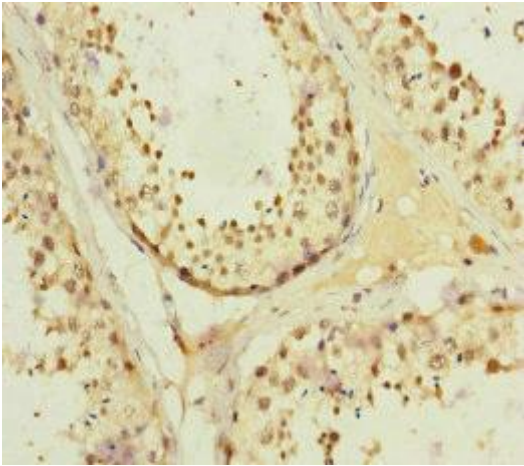
Immunogen:

Recombinant Human Kinesin-like protein KIFC3 protein (140-390AA).

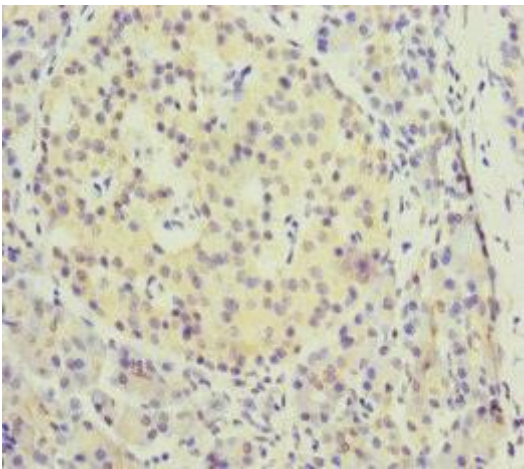
Storage:

PBS with 0.02% sodium azide, 50% glycerol, pH7.3.

Product Images



Immunohistochemistry of paraffin-embedded human testis tissue using PACO45602 at dilution of 1:100.



Immunohistochemistry of paraffin-embedded human pancreatic tissue using PACO45602 at dilution of 1:100.