

PACO45599

Product Information

Size:

50ul

Reactivity:

Human

Source:

Rabbit

Isotype:

IgG

Applications:

ELISA, IHC, IF

Recommended dilutions:

ELISA:1:2000-1:10000, IHC:1:20-1:200,
IF:1:50-1:200

Protein Background:

The GINS complex plays an essential role in the initiation of DNA replication, and progression of DNA replication forks. GINS complex seems to bind preferentially to single-stranded DNA.

Gene ID:

GINS2

Uniprot

Q9Y248

Synonyms:

DNA replication complex GINS protein PSF2 (GINS complex subunit 2), GINS2, PSF2

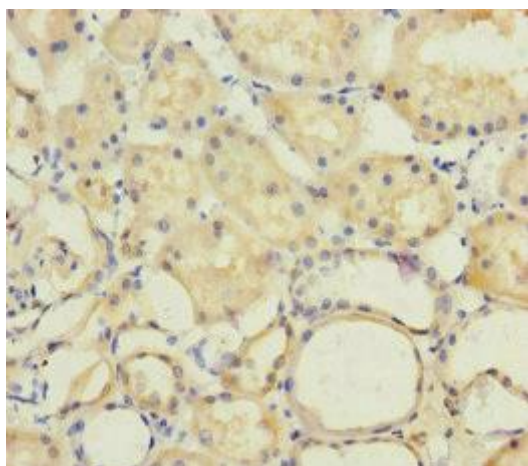
Immunogen:

Recombinant Human DNA replication complex GINS protein PSF2 protein (1-185AA).

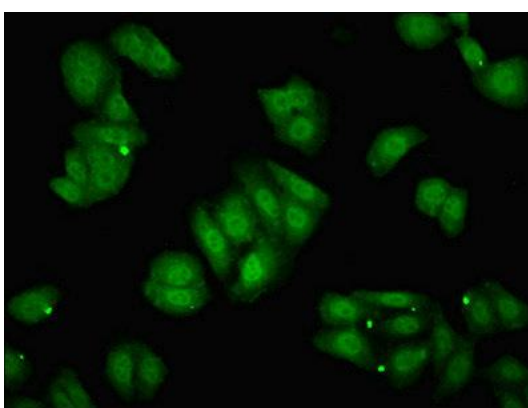
Storage:

PBS with 0.02% sodium azide, 50% glycerol, pH7.3.

Product Images



Immunohistochemistry of paraffin-embedded human kidney tissue using PACO45599 at dilution of 1:100.



Immunofluorescent analysis of HepG2 cells using PACO45599 at dilution of 1:100 and Alexa Fluor 488-conjugated AffiniPure Goat Anti-Rabbit IgG(H+L).