

PACO45597

---

## Product Information

**Size:**

50ul

**Reactivity:**

Human

**Source:**

Rabbit

**Isotype:**

IgG

**Applications:**

ELISA, IHC

**Recommended dilutions:**

ELISA:1:2000-1:10000, IHC:1:20-1:200

**Protein Background:**

May be involved in response to X-ray. Regulates p21 protein stability by binding to Hsp90 and p21.

**Gene ID:**

FKBPL

**Uniprot**

Q9UIM3

**Synonyms:**

FK506-binding protein-like (WAF-1/CIP1 stabilizing protein 39) (WISp39), FKBPL, DIR1 NG7

**Immunogen:**

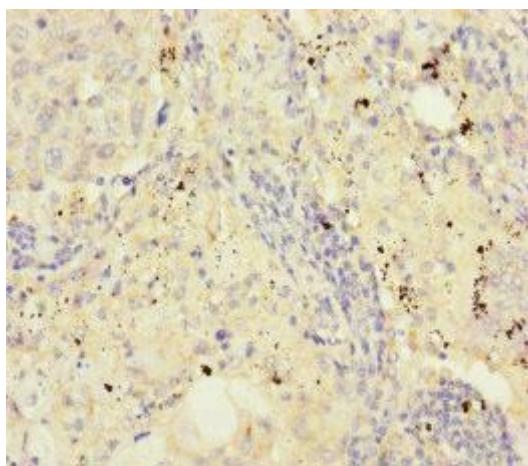
Recombinant Human FK506-binding protein-like protein (1-349AA).

**Storage:**

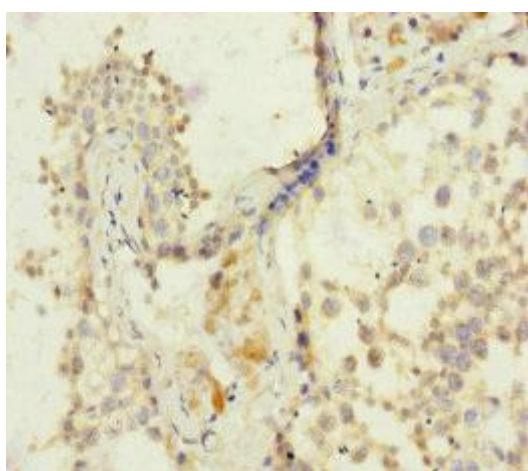
PBS with 0.02% sodium azide, 50% glycerol, pH7.3.

## Product Images

---



Immunohistochemistry of paraffin-embedded human lung cancer using PACO45597 at dilution of 1:100.



Immunohistochemistry of paraffin-embedded human testis tissue using PACO45597 at dilution of 1:100.