

## Product Information

**Size:**

50ul

**Reactivity:**

Human

**Source:**

Rabbit

**Isotype:**

IgG

**Applications:**

ELISA, IHC

**Recommended dilutions:**

ELISA:1:2000-1:10000, IHC:1:20-1:200

**Protein Background:**

Seems to mediate adhesion by cell surface integrin binding. May serve as a communication link between the dermal fibroblast cell surface and its extracellular matrix environment. Enhances TGFB1 activity. Inhibits cell proliferation. Accelerates collagen fibril formation, and stabilizes collagen fibrils against low-temperature dissociation.

**Gene ID:**

DPT

**Uniprot**

Q07507

**Synonyms:**

Dermatopontin (Tyrosine-rich acid, c matrix protein) (TRAMP), DPT

**Immunogen:**

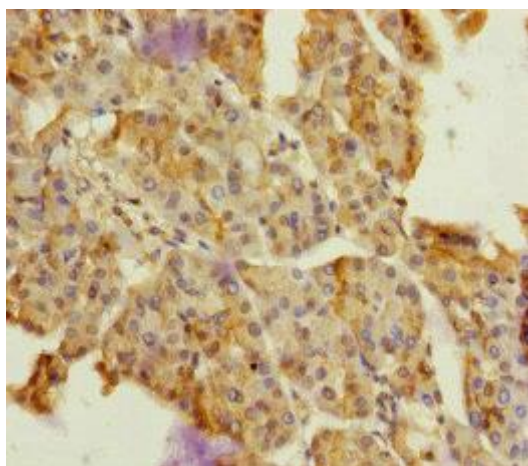
Recombinant Human Dermatopontin protein (19-201AA).

**Storage:**

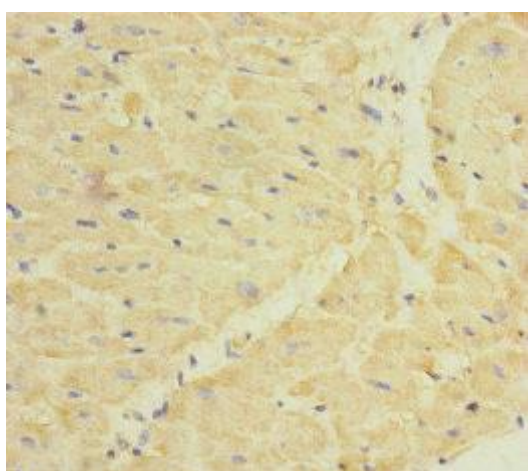
PBS with 0.02% sodium azide, 50% glycerol, pH7.3.

## Product Images

---



Immunohistochemistry of paraffin-embedded human pancreatic tissue using PACO45593 at dilution of 1:100.



Immunohistochemistry of paraffin-embedded human heart tissue using PACO45593 at dilution of 1:100.