

SUCLA2 Antibody



PACO45581

Product Information

Size:

50ul

Reactivity:

Human

Source:

Rabbit

Isotype:

IgG

Applications:

ELISA, WB, IHC

Recommended dilutions:

ELISA:1:2000-1:10000, WB:1:1000-1:5000,
IHC:1:20-1:200

Protein Background:

Catalyzes the ATP-dependent ligation of succinate and CoA to form succinyl-CoA.

Gene ID:

SUCLA2

Uniprot

Q9P2R7

Synonyms:

Succinate--CoA ligase [ADP-forming] subunit beta, mitochondrial (EC 6.2.1.5) (ATP-specific succinyl-CoA synthetase subunit beta) (A-SCS) (Succinyl-CoA synthetase beta-A chain) (SCS-betaA), SUCLA2

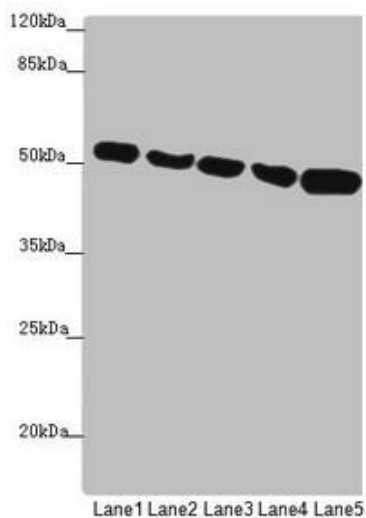
Immunogen:

Recombinant Human Succinate--CoA ligase [ADP-forming] subunit beta, mitochondrial protein (1-180AA).

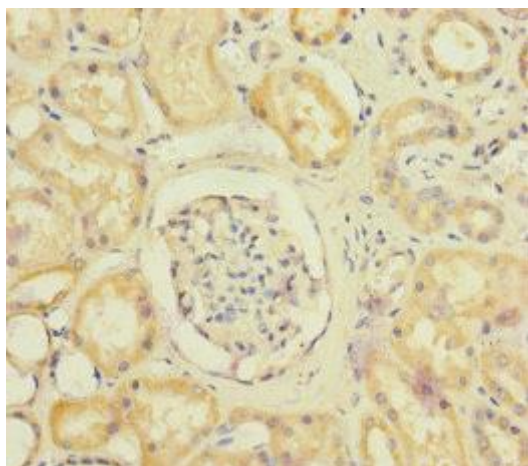
Storage:

PBS with 0.02% sodium azide, 50% glycerol, pH7.3.

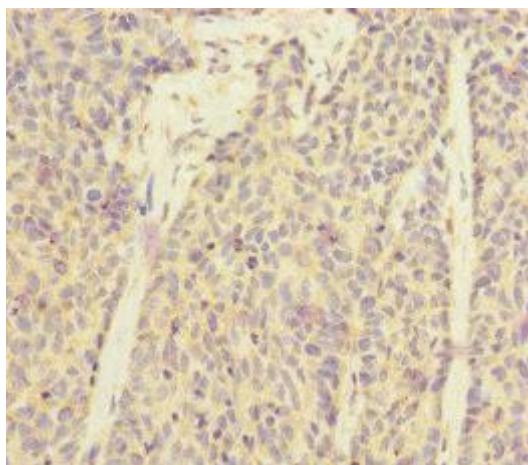
Product Images



Western blot. All lanes: SUCLA2 antibody at 1.75 μ g/ml. Lane 1: HeLa whole cell lysate. Lane 2: Jurkat whole cell lysate. Lane 3: A549 whole cell lysate. Lane 4: 293T whole cell lysate. Lane 5: HepG2 whole cell lysate. Secondary: Goat polyclonal to rabbit IgG at 1/10000 dilution. Predicted band size: 51, 49 kDa. Observed band size: 51 kDa.



Immunohistochemistry of paraffin-embedded human kidney tissue using PACO45581 at dilution of 1:100.



Immunohistochemistry of paraffin-embedded human ovarian cancer using PACO45581 at dilution of 1:100.