

SLC35A1 Antibody



PACO45580

Product Information

Size:

50ul

Reactivity:

Human

Source:

Rabbit

Isotype:

IgG

Applications:

ELISA, IHC

Recommended dilutions:

ELISA:1:2000-1:10000, IHC:1:20-1:200

Protein Background:

Transports CMP-sialic acid, from the cytosol into Golgi vesicles where glycosyltransferases function.

Gene ID:

SLC35A1

Uniprot

P78382

Synonyms:

CMP-sialic acid, transporter (CMP-SA-Tr) (CMP-Sia-Tr) (Solute carrier family 35 member A1), SLC35A1

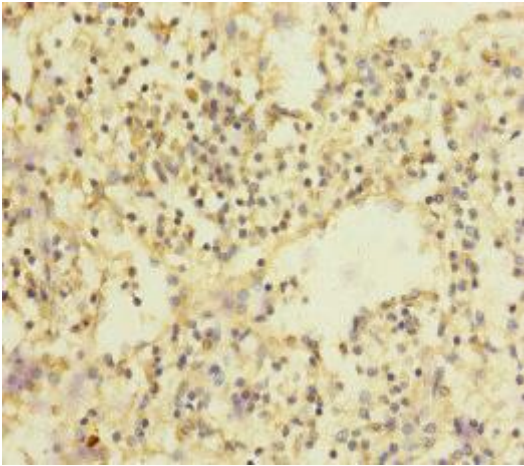
Immunogen:

Recombinant Human CMP-sialic acid, transporter protein (1-100AA).

Storage:

PBS with 0.02% sodium azide, 50% glycerol, pH7.3.

Product Images



Immunohistochemistry of paraffin-embedded human spleen tissue using PACO45580 at dilution of 1:100.