

PACO45575

Product Information

Size:

50ul

Reactivity:

Human

Source:

Rabbit

Isotype:

IgG

Applications:

ELISA, WB, IHC

Recommended dilutions:

ELISA:1:2000-1:10000, WB:1:1000-1:5000,
IHC:1:20-1:200

Protein Background:

May be involved in the regulation of serine proteinases present in the brain or extravasated from the blood. Inhibitor of cathepsin G, kallikrein-8 and thrombin. May play an important role in the inner ear in the protection against leakage of lysosomal content during stress and loss of this protection results in cell death and sensorineural hearing loss.

Gene ID:

SERPINB6

Uniprot

P35237

Synonyms:

Serpin B6 (Cytoplasmic antiproteinase) (CAP) (Peptidase inhibitor 6) (PI-6) (Placental thrombin inhibitor), SERPINB6, PI6 PTI

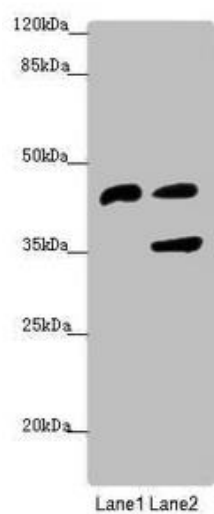
Immunogen:

Recombinant Human Serpin B6 protein (180-300AA).

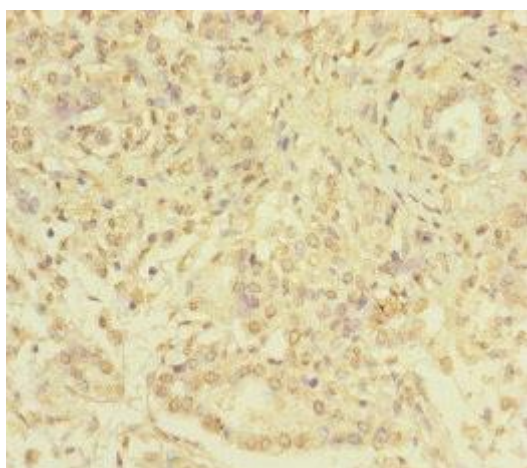
Storage:

PBS with 0.02% sodium azide, 50% glycerol, pH7.3.

Product Images



Western blot. All lanes: SERPINB6 antibody at 0.95 $\mu\text{g/ml}$. Lane 1: Human placenta tissue. Lane 2: HepG2 whole cell lysate. Secondary: Goat polyclonal to rabbit IgG at 1/10000 dilution. Predicted band size: 43 kDa. Observed band size: 43, 36 kDa.



Immunohistochemistry of paraffin-embedded human pancreatic cancer using PACO45575 at dilution of 1:100.



Immunohistochemistry of paraffin-embedded human skeletal muscle tissue using PACO45575 at dilution of 1:100.