

# RAB18 Antibody



PACO45573

---

## Product Information

**Size:**

50ul

**Reactivity:**

Human

**Source:**

Rabbit

**Isotype:**

IgG

**Applications:**

ELISA, WB, IHC

**Recommended dilutions:**

ELISA:1:2000-1:10000, WB:1:1000-1:5000,  
IHC:1:20-1:200

**Protein Background:**

Plays a role in apical endocytosis/recycling. May be implicated in transport between the plasma membrane and early endosomes. Plays a key role in eye and brain development and neurodegeneration.

**Gene ID:**

RAB18

**Uniprot**

Q9NP72

**Synonyms:**

Ras-related protein Rab-18, RAB18

**Immunogen:**

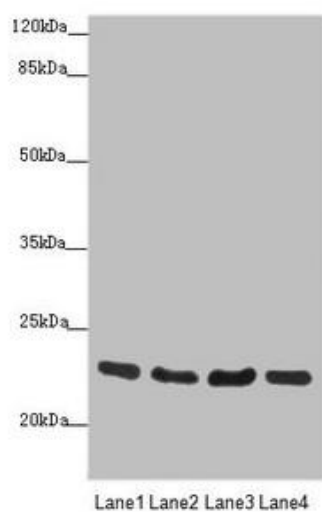
Recombinant Human Ras-related protein Rab-18 protein (1-206AA).

**Storage:**

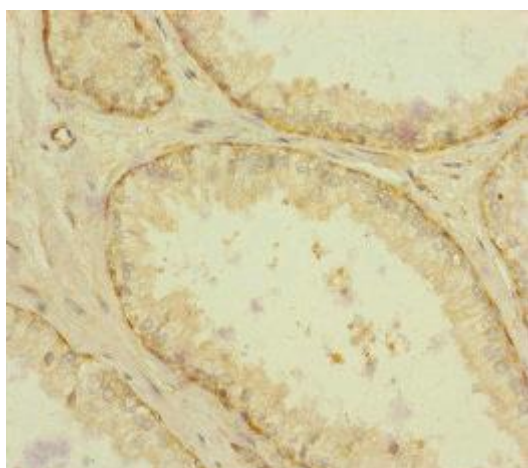
PBS with 0.02% sodium azide, 50% glycerol, pH7.3.

## Product Images

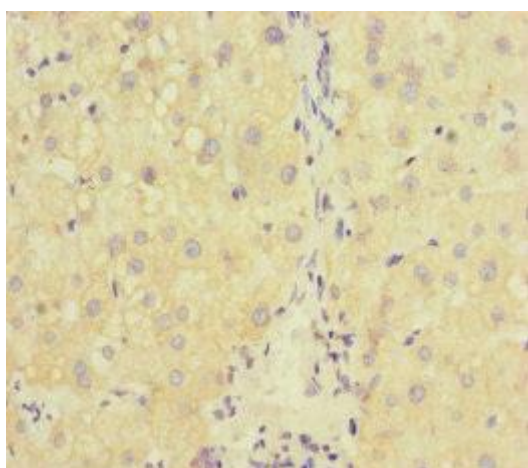
---



Western blot. All lanes: RAB18 antibody at 0.88 $\mu$ g/ml. Lane 1: HepG2 whole cell lysate. Lane 2: PC-3 whole cell lysate. Lane 3: A375 whole cell lysate. Lane 4: 293T whole cell lysate. Secondary: Goat polyclonal to rabbit IgG at 1/10000 dilution. Predicted band size: 23, 27, 16 kDa. Observed band size: 23 kDa.



Immunohistochemistry of paraffin-embedded human prostate cancer using PACO45573 at dilution of 1:100.



Immunohistochemistry of paraffin-embedded human liver cancer using PACO45573 at dilution of 1:100.