

# NELL1 Antibody



PACO45569

---

## Product Information

**Size:**

50ul

**Reactivity:**

Human, Mouse

**Source:**

Rabbit

**Isotype:**

IgG

**Applications:**

ELISA, WB, IHC

**Recommended dilutions:**

ELISA:1:2000-1:10000, WB:1:1000-1:5000,  
IHC:1:20-1:200

**Protein Background:**

Plays a role in the control of cell growth and differentiation. Promotes osteoblast cell differentiation and terminal mineralization.

**Gene ID:**

NELL1

**Uniprot**

Q92832

**Synonyms:**

Protein kinase C-binding protein NELL1 (NEL-like protein 1) (Nel-related protein 1),  
NELL1, NRP1

**Immunogen:**

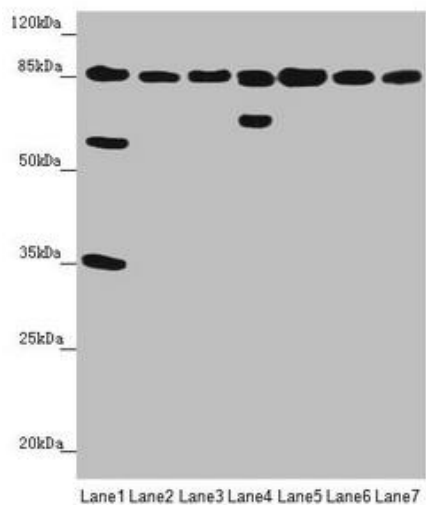
Recombinant Human Protein kinase C-binding protein NELL1 protein (160-420AA).

**Storage:**

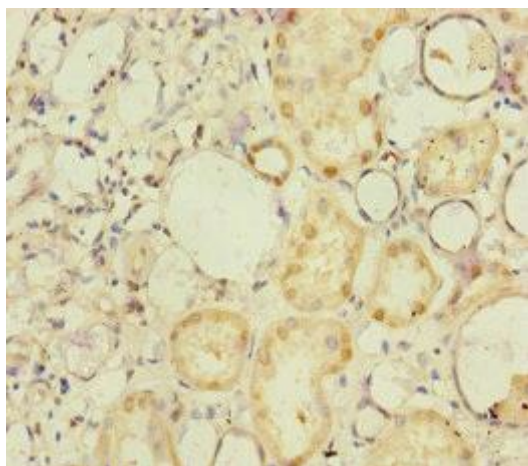
PBS with 0.02% sodium azide, 50% glycerol, pH7.3.

## Product Images

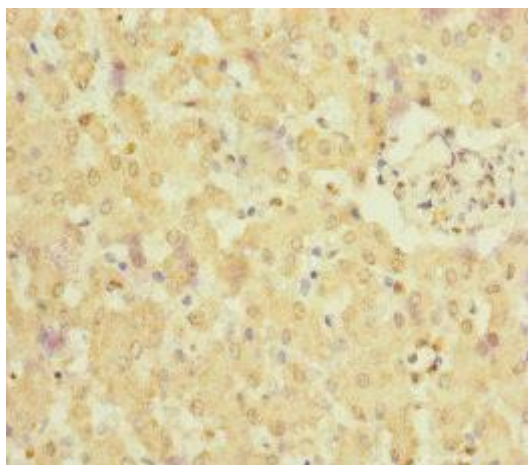
---



Western blot. All lanes: NELL1 antibody at 3.47  $\mu\text{g/ml}$ . Lane 1: Mouse liver tissue. Lane 2: Mouse kidney tissue. Lane 3: Mouse spleen tissue. Lane 4: Human placenta tissue. Lane 5: Hela whole cell lysate. Lane 6: Jurkat whole cell lysate. Lane 7: MCF-7 whole cell lysate. Secondary: Goat polyclonal to rabbit IgG at 1/10000 dilution. Predicted band size: 90, 85 kDa. Observed band size: 90, 65, 58, 35 kDa.



Immunohistochemistry of paraffin-embedded human kidney tissue using PACO45569 at dilution of 1:100.



Immunohistochemistry of paraffin-embedded human liver tissue using PACO45569 at dilution of 1:100.