

PACO45568

---

## Product Information

**Size:**

50ul

**Reactivity:**

Human

**Source:**

Rabbit

**Isotype:**

IgG

**Applications:**

ELISA, IHC

**Recommended dilutions:**

ELISA:1:2000-1:10000, IHC:1:20-1:200

**Protein Background:**

Couples NMDA-sensitive glutamate receptor signaling to the nucleus and triggers long-lasting changes in the cytoarchitecture of dendrites and spine synapse processes. Part of the cAMP response element-binding protein (CREB) shut-off signaling pathway. Stimulates outgrowth of olfactory axons and migration of gonadotropin-releasing hormone (GnRH) and luteinizing-hormone-releasing hormone (LHRH) neuronal cells.

**Gene ID:**

NSMF

**Uniprot**

Q6X4W1

**Synonyms:**

NMDA receptor synaptonuclear signaling and neuronal migration factor (Nasal embryonic luteinizing hormone-releasing hormone factor) (Nasal embryonic LHRH factor), NSMF, NELF

**Immunogen:**

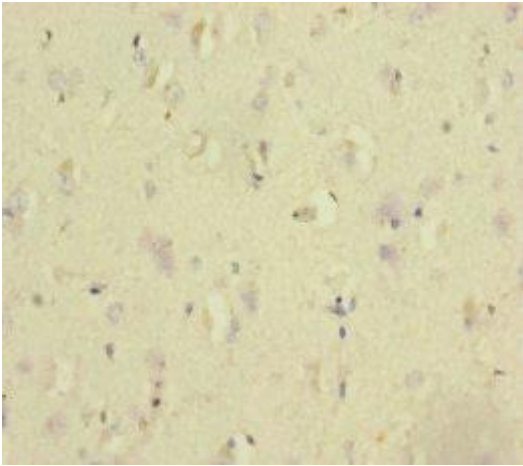
Recombinant Human NMDA receptor synaptonuclear signaling and neuronal migration factor protein (251-530AA).

**Storage:**

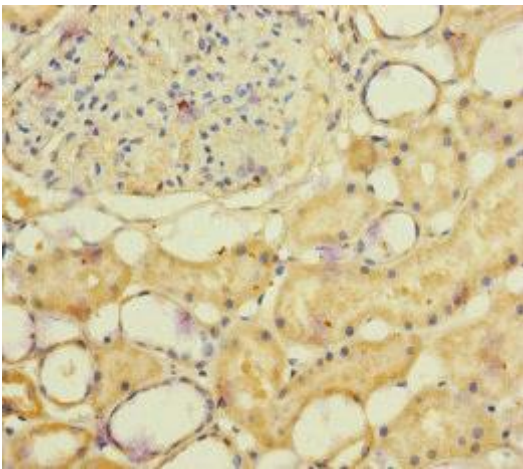
PBS with 0.02% sodium azide, 50% glycerol, pH7.3.

## Product Images

---



Immunohistochemistry of paraffin-embedded human brain tissue using PACO45568 at dilution of 1:100.



Immunohistochemistry of paraffin-embedded human kidney tissue using PACO45568 at dilution of 1:100.