

PACO45567

Product Information

Size:

50ul

Reactivity:

Human

Source:

Rabbit

Isotype:

IgG

Applications:

ELISA, IHC

Recommended dilutions:

ELISA:1:2000-1:10000, IHC:1:20-1:200

Protein Background:

Couples NMDA-sensitive glutamate receptor signaling to the nucleus and triggers long-lasting changes in the cytoarchitecture of dendrites and spine synapse processes. Part of the cAMP response element-binding protein (CREB) shut-off signaling pathway. Stimulates outgrowth of olfactory axons and migration of gonadotropin-releasing hormone (GnRH) and luteinizing-hormone-releasing hormone (LHRH) neuronal cells.

Gene ID:

NSMF

Uniprot

Q6X4W1

Synonyms:

NMDA receptor synaptonuclear signaling and neuronal migration factor (Nasal embryonic luteinizing hormone-releasing hormone factor) (Nasal embryonic LHRH factor), NSMF, NELF

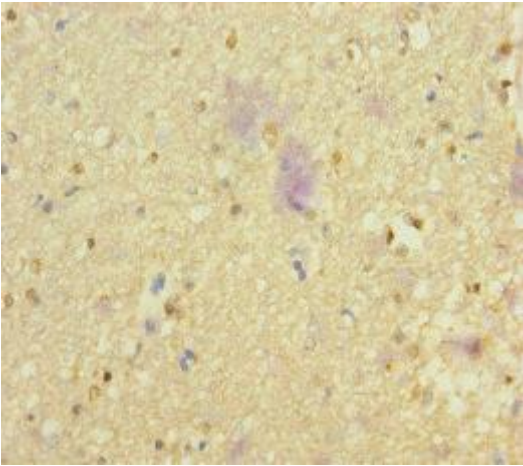
Immunogen:

Recombinant Human NMDA receptor synaptonuclear signaling and neuronal migration factor protein (251-530AA).

Storage:

PBS with 0.02% sodium azide, 50% glycerol, pH7.3.

Product Images



Immunohistochemistry of paraffin-embedded human brain tissue using PACO45567 at dilution of 1:100.