

Product Information

Size:

50ul

Reactivity:

Human

Source:

Rabbit

Isotype:

IgG

Applications:

ELISA, WB, IHC

Recommended dilutions:

ELISA:1:2000-1:10000, WB:1:1000-1:5000,
IHC:1:20-1:200

Protein Background:

Biotin-attachment subunit of the 3-methylcrotonyl-CoA carboxylase, an enzyme that catalyzes the conversion of 3-methylcrotonyl-CoA to 3-methylglutaconyl-CoA, a critical step for leucine and isovaleric acid, catabolism.

Gene ID:

MCCC1

Uniprot

Q96RQ3

Synonyms:

Methylcrotonoyl-CoA carboxylase subunit alpha, mitochondrial (MCCase subunit alpha) (EC 6.4.1.4) (3-methylcrotonyl-CoA carboxylase 1) (3-methylcrotonyl-CoA carboxylase biotin-containing subunit) (3-methylcrotonyl-CoA: carbon dioxide ligase subunit alpha), MCCC1, MCCA

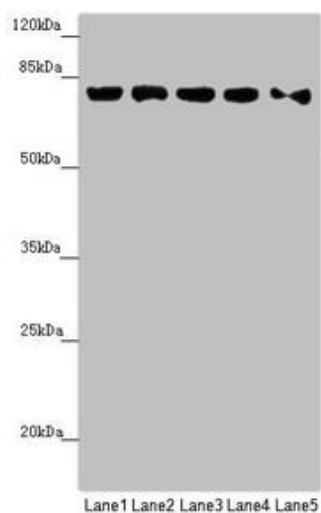
Immunogen:

Recombinant Human Methylcrotonoyl-CoA carboxylase subunit alpha, mitochondrial protein (526-725AA).

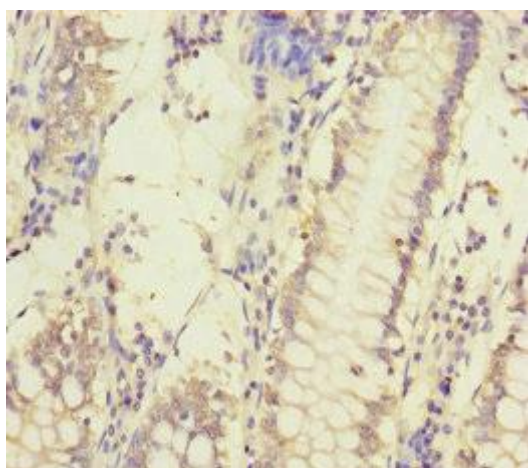
Storage:

PBS with 0.02% sodium azide, 50% glycerol, pH7.3.

Product Images



Western blot. All lanes: MCCC1 antibody at 0.89 μ g/ml. Lane 1: HepG2 whole cell lysate. Lane 2: 293T whole cell lysate. Lane 3: Hela whole cell lysate. Lane 4: MCF-7 whole cell lysate. Lane 5: A549 whole cell lysate. Secondary. Goat polyclonal to rabbit IgG at 1/10000 dilution. Predicted band size: 81 kDa. Observed band size: 81 kDa.



Immunohistochemistry of paraffin-embedded human colon cancer using PACO45561 at dilution of 1:100.