

# CRIP2 Antibody



PACO45556

---

## Product Information

**Size:**

50ul

**Reactivity:**

Human, Mouse, Rat

**Source:**

Rabbit

**Isotype:**

IgG

**Applications:**

ELISA, WB, IHC

**Recommended dilutions:**

ELISA:1:2000-1:10000, WB:1:1000-1:5000,  
IHC:1:20-1:200

**Protein Background:**

zinc ion binding.

**Gene ID:**

CRIP2

**Uniprot**

P52943

**Synonyms:**

Cysteine-rich protein 2 (CRP-2) (Protein ESP1), CRIP2, CRP2

**Immunogen:**

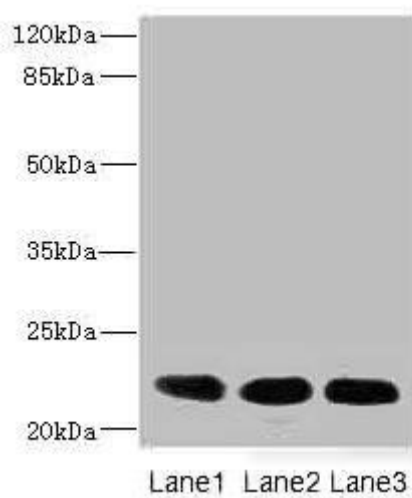
Recombinant Human Cysteine-rich protein 2 protein (1-208AA).

**Storage:**

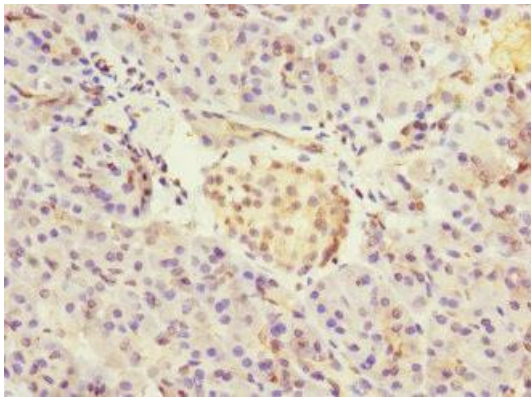
PBS with 0.02% sodium azide, 50% glycerol, pH7.3.

## Product Images

---



Western blot. All lanes: CRIP2 antibody at 4.68 $\mu$ g/ml. Lane 1: Rat heart tissue. Lane 2: Mouse lung tissue. Lane 3: MCF-7 whole cell lysate. Secondary. Goat polyclonal to rabbit IgG at 1/10000 dilution. Predicted band size: 23, 31 kDa. Observed band size: 23 kDa.



Immunohistochemistry of paraffin-embedded human pancreatic tissue using PACO45556 at dilution of 1:100.