

TIMM50 Antibody



PACO45554

Product Information

Size:

50ul

Reactivity:

Human, Rat

Source:

Rabbit

Isotype:

IgG

Applications:

ELISA, WB, IHC

Recommended dilutions:

ELISA:1:2000-1:10000, WB:1:1000-1:5000,
IHC:1:20-1:200

Protein Background:

Essential component of the TIM23 complex, a complex that mediates the translocation of transit peptide-containing proteins across the mitochondrial inner membrane. Has some phosphatase activity in vitro; however such activity may not be relevant in vivo. Isoform 2 may participate in the release of snRNPs and SMN from the Cajal body.

Gene ID:

TIMM50

Uniprot

Q3ZCQ8

Synonyms:

Mitochondrial import inner membrane translocase subunit TIM50, TIMM50, TIM50

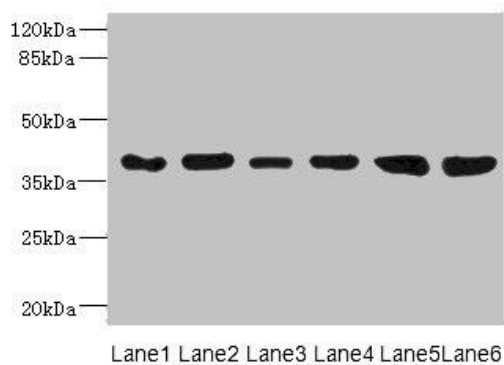
Immunogen:

Recombinant Human Mitochondrial import inner membrane translocase subunit TIM50 protein (87-353AA).

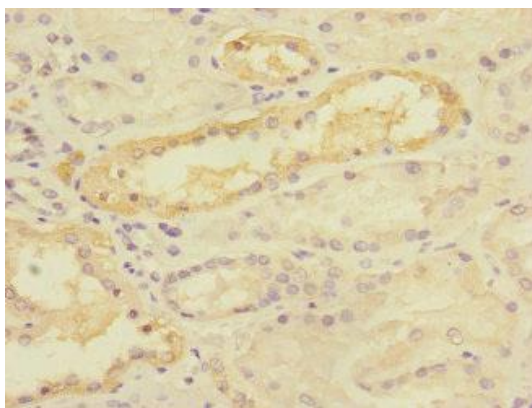
Storage:

PBS with 0.02% sodium azide, 50% glycerol, pH7.3.

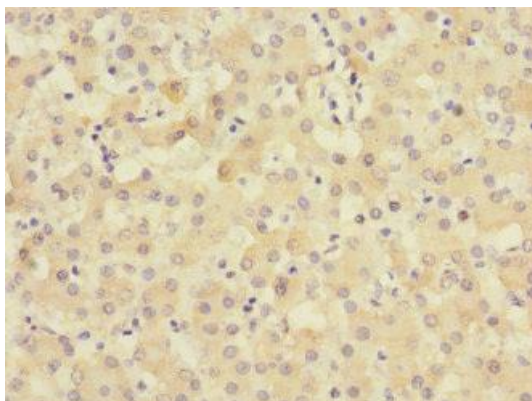
Product Images



Western blot. All lanes: TIMM50 antibody at 4.05µg/ml. Lane 1: Rat heart tissue. Lane 2: MM231 whole cell lysate. Lane 3: MCF-7 whole cell lysate. Lane 4: Hela whole cell lysate. Lane 5: 293T whole cell lysate. Lane 6: HepG2 whole cell lysate. Secondary. Goat polyclonal to rabbit IgG at 1/10000 dilution. Predicted band size: 40, 51, 28 kDa. Observed band size: 40 kDa.



Immunohistochemistry of paraffin-embedded human kidney tissue using PACO45554 at dilution of 1:100.



Immunohistochemistry of paraffin-embedded human liver tissue using PACO45554 at dilution of 1:100.