

# MTERF3 Antibody



PACO45548

---

## Product Information

**Size:**

50ul

**Reactivity:**

Human

**Source:**

Rabbit

**Isotype:**

IgG

**Applications:**

ELISA, WB, IHC

**Recommended dilutions:**

ELISA:1:2000-1:10000, WB:1:1000-1:5000,  
IHC:1:20-1:200

**Protein Background:**

Binds promoter DNA and regulates initiation of transcription. Required for normal mitochondrial transcription, and for normal assembly of mitochondrial respiratory complexes. Required for normal mitochondrial function.

**Gene ID:**

MTERF3

**Uniprot**

Q96E29

**Synonyms:**

Transcription termination factor 3, mitochondrial (Mitochondrial transcription termination factor 3) (mTERF3) (mTERF domain-containing protein 1, mitochondrial), MTERF3, MTERFD1

**Immunogen:**

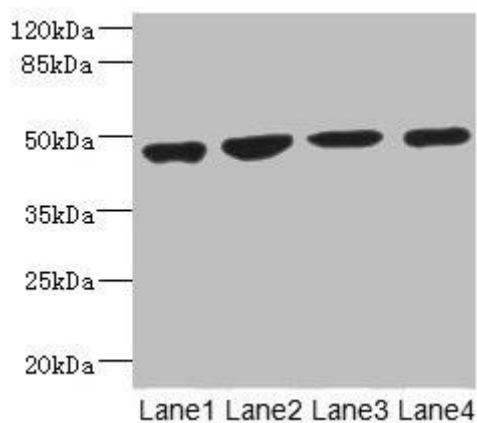
Recombinant Human Transcription termination factor 3, mitochondrial protein (69-300AA).

**Storage:**

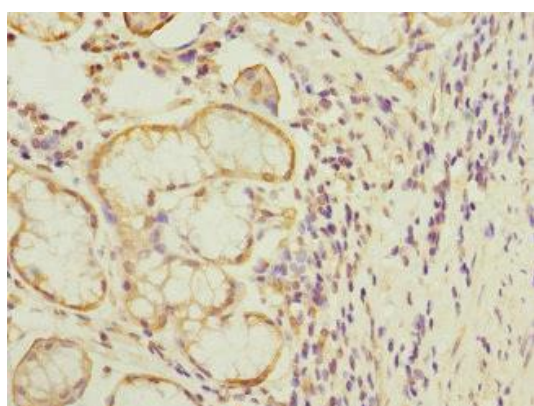
PBS with 0.02% sodium azide, 50% glycerol, pH7.3.

## Product Images

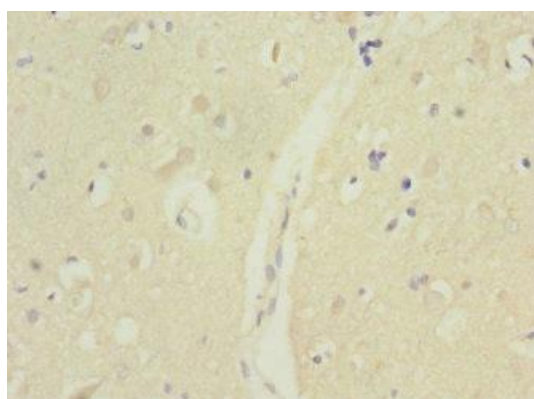
---



Western blot. All lanes: MTERFD1 antibody at 3.94 $\mu$ g/ml. Lane 1: U251 whole cell lysate. Lane 2: 293T whole cell lysate. Lane 3: Hela whole cell lysate. Lane 4: K562 whole cell lysate. Secondary. Goat polyclonal to rabbit IgG at 1/10000 dilution. Predicted band size: 48, 38, 35 kDa. Observed band size: 48 kDa.



Immunohistochemistry of paraffin-embedded human gastric cancer using PACO45548 at dilution of 1:100.



Immunohistochemistry of paraffin-embedded human brain tissue using PACO45548 at dilution of 1:100.