

PACO45545

Product Information

Size:

50ul

Reactivity:

Human

Source:

Rabbit

Isotype:

IgG

Applications:

ELISA, IHC

Recommended dilutions:

ELISA:1:2000-1:10000, IHC:1:20-1:200

Protein Background:

Essential component of the PAM complex, a complex required for the translocation of transit peptide-containing proteins from the inner membrane into the mitochondrial matrix in an ATP-dependent manner. Seems to control the nucleotide-dependent binding of mitochondrial HSP70 to substrate proteins. Stimulates ATPase activity of mt-HSP70. May also serve to modulate the interconversion of oligomeric (inactive) and monomeric (active) forms of mt-HSP70.

Gene ID:

GRPEL2

Uniprot

Q8TAA5

Synonyms:

GrpE protein homolog 2, mitochondrial (Mt-GrpE#2), GRPEL2

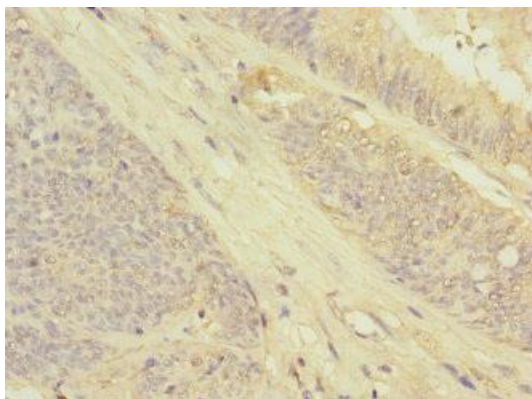
Immunogen:

Recombinant Human GrpE protein homolog 2, mitochondrial protein (33-225AA).

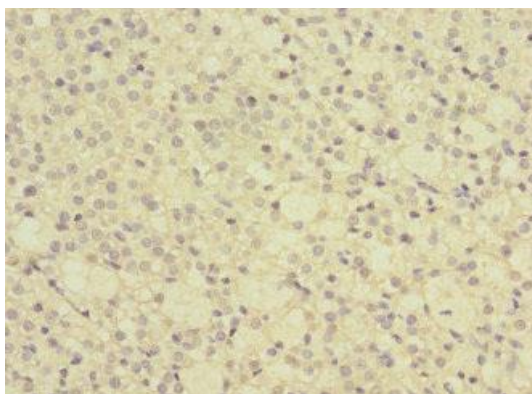
Storage:

PBS with 0.02% sodium azide, 50% glycerol, pH7.3.

Product Images



Immunohistochemistry of paraffin-embedded human colon cancer using PACO45545 at dilution of 1:100.



Immunohistochemistry of paraffin-embedded human adrenal gland tissue using PACO45545 at dilution of 1:100.