

# NAA25 Antibody



PACO45542

---

## Product Information

**Size:**

50ul

**Reactivity:**

Human, Mouse

**Source:**

Rabbit

**Isotype:**

IgG

**Applications:**

ELISA, WB, IHC

**Recommended dilutions:**

ELISA:1:2000-1:10000, WB:1:1000-1:5000,  
IHC:1:20-1:200

**Protein Background:**

Non-catalytic subunit of the NatB complex which catalyzes acetylation of the N-terminal methionine residues of peptides beginning with Met-Asp-Glu. May play a role in normal cell-cycle progression.

**Gene ID:**

NAA25

**Uniprot**

Q14CX7

**Synonyms:**

N-alpha-acetyltransferase 25, NatB auxiliary subunit (Mitochondrial distribution and morphology protein 20) (N-terminal acetyltransferase B complex subunit MDM20) (NatB complex subunit MDM20) (N-terminal acetyltransferase B complex subunit NAA25) (p120), NAA25, C12orf30 MDM20 NAP1

**Immunogen:**

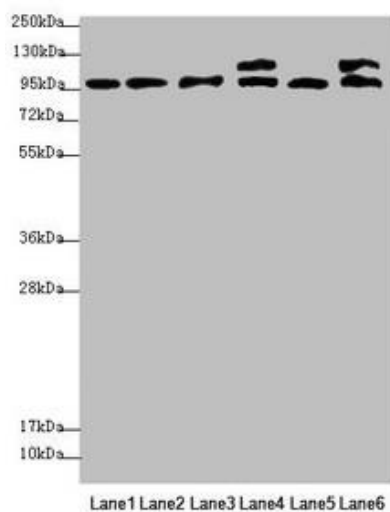
Recombinant Human N-alpha-acetyltransferase 25, NatB auxiliary subunit protein (703-972AA).

**Storage:**

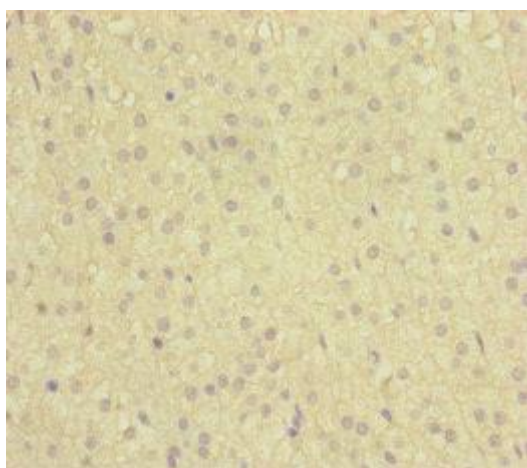
PBS with 0.02% sodium azide, 50% glycerol, pH7.3.

## Product Images

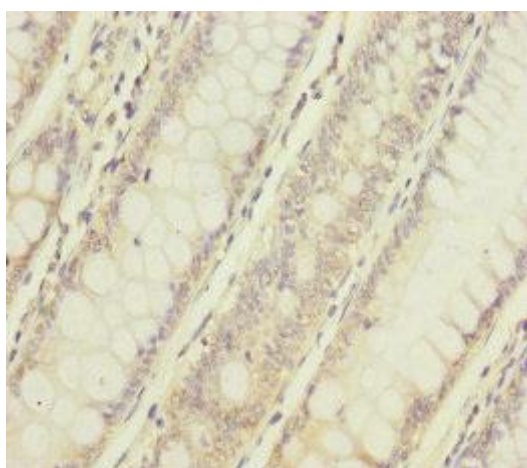
---



Western blot. All lanes: NAA25 antibody at 2.12 $\mu$ g/ml. Lane 1: Mouse liver tissue. Lane 2: Mouse kidney tissue. Lane 3: Hela whole cell lysate. Lane 4: 293T whole cell lysate. Lane 5: A549 whole cell lysate. Lane 6: HepG2 whole cell lysate. Secondary: Goat polyclonal to rabbit IgG at 1/10000 dilution. Predicted band size: 113, 100 kDa. Observed band size: 113, 100 kDa.



Immunohistochemistry of paraffin-embedded human adrenal gland tissue using PACO45542 at dilution of 1:100.



Immunohistochemistry of paraffin-embedded human colon cancer tissue using PACO45542 at dilution of 1:100.