

## Product Information

**Size:**

50ul

**Reactivity:**

Human

**Source:**

Rabbit

**Isotype:**

IgG

**Applications:**

ELISA, IHC

**Recommended dilutions:**

ELISA:1:2000-1:10000, IHC:1:20-1:200

**Protein Background:**

Accepts ubiquitin from the E1 complex and catalyzes its covalent attachment to other proteins. Catalyzes 'Lys-11'-linked polyubiquitination. Acts as an essential factor of the anaphase promoting complex/cyclosome (APC/C), a cell cycle-regulated ubiquitin ligase that controls progression through mitosis. Acts by specifically elongating 'Lys-11'-linked polyubiquitin chains initiated by the E2 enzyme UBE2C/UBCH10 on APC/C substrates, enhancing the degradation of APC/C substrates by the proteasome and promoting mitotic exit. Also acts by elongating ubiquitin chains initiated by the E2 enzyme UBE2D1/UBCH5 in vitro; it is however unclear whether UBE2D1/UBCH5 acts as a E2 enzyme for the APC/C in vivo. Also involved in ubiquitination and subsequent degradation of VHL, resulting in an accumulation of HIF1A. In vitro able to promote polyubiquitination using all 7 ubiquitin Lys residues, except 'Lys-48'-linked polyubiquitination.

**Gene ID:**

UBE2S

**Uniprot**

Q16763

**Synonyms:**

Ubiquitin-conjugating enzyme E2 S (EC 2.3.2.23) (E2 ubiquitin-conjugating enzyme S) (E2-EPF) (Ubiquitin carrier protein S) (Ubiquitin-conjugating enzyme E2-24 kDa) (Ubiquitin-conjugating enzyme E2-EPF5) (Ubiquitin-protein ligase S), UBE2S, E2EPF

**Immunogen:**

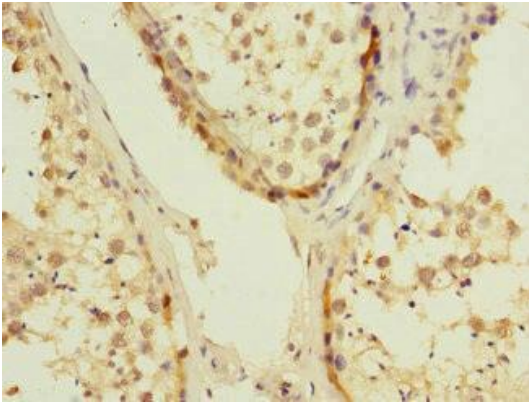
Recombinant Human Ubiquitin-conjugating enzyme E2 S protein (1-222AA).

**Storage:**

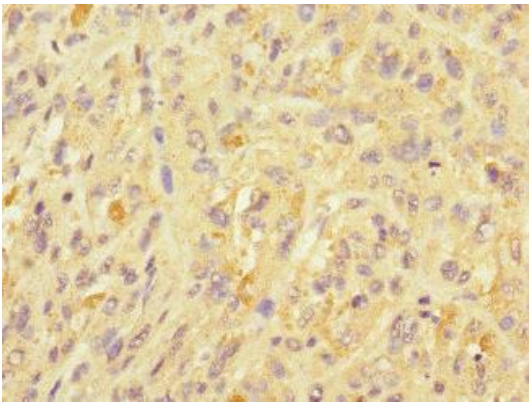
PBS with 0.02% sodium azide, 50% glycerol, pH7.3.

## Product Images

---



Immunohistochemistry of paraffin-embedded human testis tissue using PACO45538 at dilution of 1:100.



Immunohistochemistry of paraffin-embedded human melanoma using PACO45538 at dilution of 1:100.