

Product Information

Size:

50ul

Reactivity:

Human

Source:

Rabbit

Isotype:

IgG

Applications:

ELISA, IHC

Recommended dilutions:

ELISA:1:2000-1:10000, IHC:1:20-1:200

Protein Background:

Accepts the ubiquitin-like protein NEDD8 from the UBA3-NAE1 E1 complex and catalyzes its covalent attachment to other proteins. The specific interaction with the E3 ubiquitin ligase RBX2, but not RBX1, suggests that the RBX2-UBE2F complex neddylates specific target proteins, such as CUL5.

Gene ID:

UBE2F

Uniprot

Q969M7

Synonyms:

NEDD8-conjugating enzyme UBE2F (EC 2.3.2. -) (NEDD8 carrier protein UBE2F) (NEDD8 protein ligase UBE2F) (NEDD8-conjugating enzyme 2) (RING-type E3 NEDD8 transferase UBE2F) (Ubiquitin-conjugating enzyme E2 F), UBE2F, NCE2

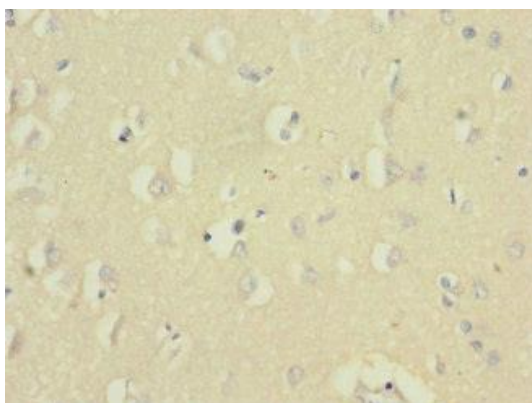
Immunogen:

Recombinant Human NEDD8-conjugating enzyme UBE2F protein (1-185AA).

Storage:

PBS with 0.02% sodium azide, 50% glycerol, pH7.3.

Product Images



Immunohistochemistry of paraffin-embedded human brain tissue using PACO45537 at dilution of 1:100.