

## Product Information

**Size:**

50ul

**Reactivity:**

Human

**Source:**

Rabbit

**Isotype:**

IgG

**Applications:**

ELISA, IHC

**Recommended dilutions:**

ELISA:1:2000-1:10000, IHC:1:20-1:200

**Protein Background:**

Regulates G protein-coupled receptor signaling cascades, including signaling downstream of the muscarinic acetylcholine receptor CHRM2. Inhibits signal transduction by increasing the GTPase activity of G protein alpha subunits, thereby driving them into their inactive GDP-bound form. Modulates the activity of potassium channels that are activated in response to CHRM2 signaling. Activity on GNAZ is inhibited by palmitoylation of the G-protein.

**Gene ID:**

RGS10

**Uniprot**

O43665

**Synonyms:**

Regulator of G-protein signaling 10 (RGS10), RGS10

**Immunogen:**

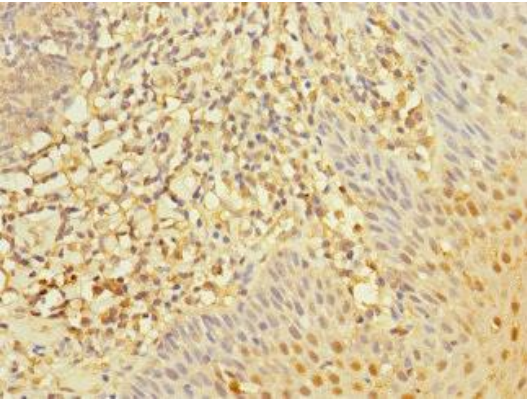
Recombinant Human Regulator of G-protein signaling 10 protein (1-181AA).

**Storage:**

PBS with 0.02% sodium azide, 50% glycerol, pH7.3.

## Product Images

---



Immunohistochemistry of paraffin-embedded human tonsil tissue using PACO45536 at dilution of 1:100.