

# ARHGEF3 Antibody



PACO45533

---

## Product Information

**Size:**

50ul

**Reactivity:**

Human

**Source:**

Rabbit

**Isotype:**

IgG

**Applications:**

ELISA, WB, IHC

**Recommended dilutions:**

ELISA:1:2000-1:10000, WB:1:1000-1:5000,  
IHC:1:20-1:200

**Protein Background:**

Acts as guanine nucleotide exchange factor (GEF) for RhoA and RhoB GTPases.

**Gene ID:**

ARHGEF3

**Uniprot**

Q9NR81

**Synonyms:**

Rho guanine nucleotide exchange factor 3 (Exchange factor found in platelets and leukemic and neuronal tissues) (XPLN), ARHGEF3

**Immunogen:**

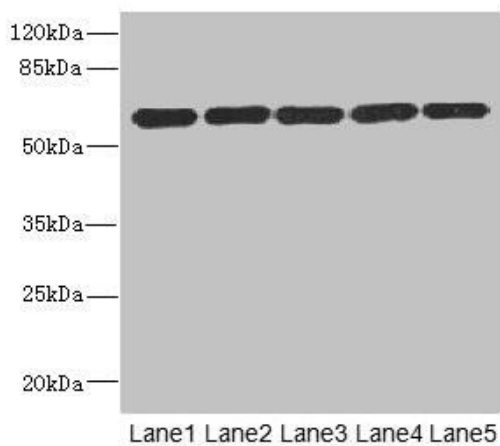
Recombinant Human Rho guanine nucleotide exchange factor 3 protein (287-526AA).

**Storage:**

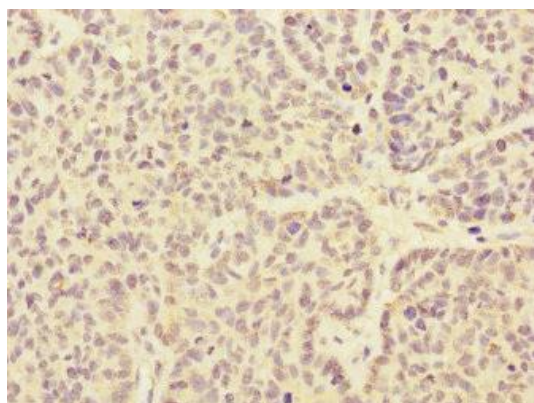
PBS with 0.02% sodium azide, 50% glycerol, pH7.3.

## Product Images

---



Western blot. All lanes: ARHGEF3 antibody at 2.21 $\mu$ g/ml. Lane 1: MCF-7 whole cell lysate. Lane 2: HepG2 whole cell lysate. Lane 3: Jurkat whole cell lysate. Lane 4: Hela whole cell lysate. Lane 5: 293T whole cell lysate. Secondary. Goat polyclonal to rabbit IgG at 1/10000 dilution. Predicted band size: 60, 64, 61, 37 kDa. Observed band size: 60 kDa.



Immunohistochemistry of paraffin-embedded human ovarian cancer using PACO45533 at dilution of 1:100.