

Product Information

Size:

50ul

Reactivity:

Human

Source:

Rabbit

Isotype:

IgG

Applications:

ELISA, IHC

Recommended dilutions:

ELISA:1:2000-1:10000, IHC:1:20-1:200

Protein Background:

Acts as an adapter for the receptor ERBB2, in epithelia. By binding the unphosphorylated 'Tyr-1248' of receptor ERBB2, it may contribute to stabilize this unphosphorylated state. Inhibits NOD2-dependent NF-kappa-B signaling and proinflammatory cytokine secretion.

Gene ID:

ERBIN

Uniprot

Q96RT1

Synonyms:

Erbin (Densin-180-like protein) (Erb2-interacting protein) (Protein LAP2), ERBIN, ERBB2IP KIAA1225 LAP2

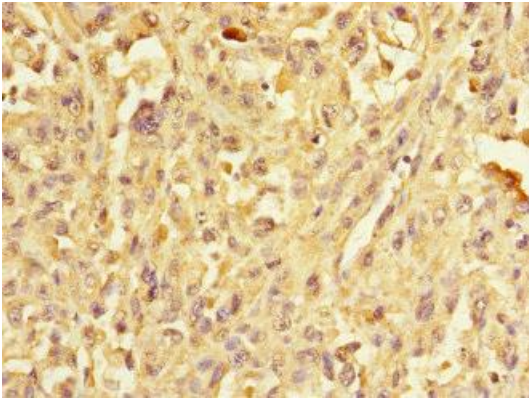
Immunogen:

Recombinant Human Erbin protein (1193-1412AA).

Storage:

PBS with 0.02% sodium azide, 50% glycerol, pH7.3.

Product Images



Immunohistochemistry of paraffin-embedded human melanoma using PACO45525 at dilution of 1:100.