

PACO45518

Product Information

Size:

50ul

Reactivity:

Human

Source:

Rabbit

Isotype:

IgG

Applications:

ELISA, WB

Recommended dilutions:

ELISA:1:2000-1:10000, WB:1:1000-1:5000

Protein Background:

Binds to the 37-bp core of the locus control region (LCR) of the red/green visual pigment gene cluster. May regulate the activity of the LCR and the cone opsin genes at earlier stages of development.

Gene ID:

VSX1

Uniprot

Q9NZR4

Synonyms:

Visual system homeobox 1 (Homeodomain protein RINX) (Retinal inner nuclear layer homeobox protein) (Transcription factor VSX1), VSX1, RINX

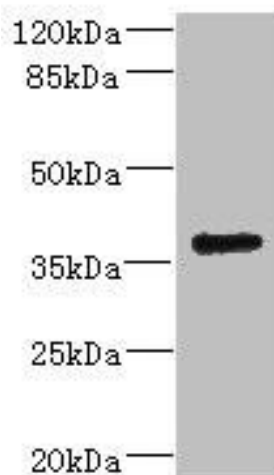
Immunogen:

Recombinant Human Visual system homeobox 1 protein (1-170AA).

Storage:

PBS with 0.02% sodium azide, 50% glycerol, pH7.3.

Product Images



Western blot. All lanes: VSX1 antibody IgG at 2.32 μ g/ml + 293T whole cell lysate. Secondary. Goat polyclonal to rabbit IgG at 1/10000 dilution. Predicted band size: 39, 25, 40, 15, 30, 23, 25, 33 kDa. Observed band size: 39 kDa.