

# KREMEN1 Antibody



PACO45493

---

## Product Information

**Size:**

50ul

**Reactivity:**

Human

**Source:**

Rabbit

**Isotype:**

IgG

**Applications:**

ELISA, IHC

**Recommended dilutions:**

ELISA:1:2000-1:10000, IHC:1:20-1:200

**Protein Background:**

Receptor for Dickkopf protein. Cooperates with Dickkopf to block Wnt/beta-catenin signaling.

**Gene ID:**

KREMEN1

**Uniprot**

Q96MU8

**Synonyms:**

Kremen protein 1 (Dickkopf receptor) (Kringle domain-containing transmembrane protein 1) (Kringle-containing protein marking the eye and the nose), KREMEN1, KREMEN KRM1

**Immunogen:**

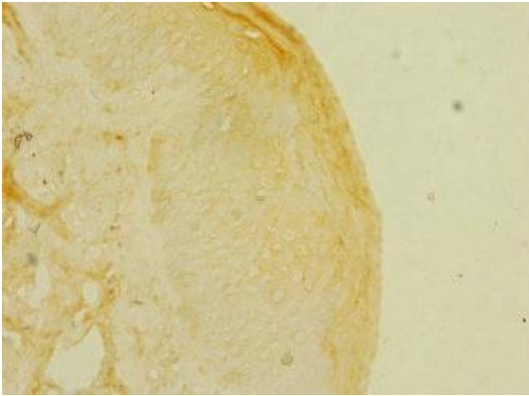
Recombinant Human Kremen protein 1 protein (180-380AA).

**Storage:**

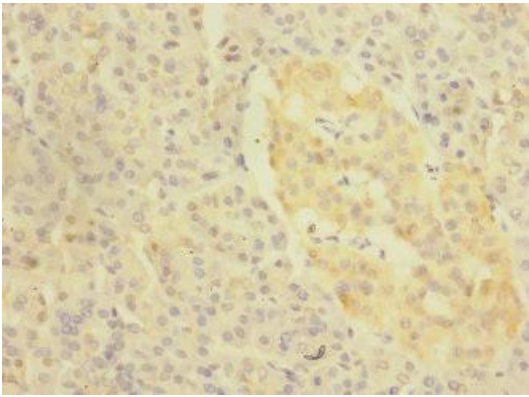
PBS with 0.02% sodium azide, 50% glycerol, pH7.3.

## Product Images

---



Immunohistochemistry of paraffin-embedded human skin tissue using PACO45493 at dilution of 1:100.



Immunohistochemistry of paraffin-embedded human pancreatic tissue using PACO45493 at dilution of 1:100.