

TAS1R3 Antibody



PACO45482

Product Information

Size:

50ul

Reactivity:

Human

Source:

Rabbit

Isotype:

IgG

Applications:

ELISA, WB, IHC

Recommended dilutions:

ELISA:1:2000-1:10000, WB:1:1000-1:5000,
IHC:1:20-1:200

Protein Background:

Putative taste receptor. TAS1R1/TAS1R3 responds to the umami taste stimulus (the taste of monosodium glutamate). TAS1R2/TAS1R3 recognizes diverse natural and synthetic sweeteners. TAS1R3 is essential for the recognition and response to the disaccharide trehalose. Sequence differences within and between species can significantly influence the selectivity and specificity of taste responses.

Gene ID:

TAS1R3

Uniprot

Q7RTX0

Synonyms:

Taste receptor type 1 member 3 (Sweet taste receptor T1R3), TAS1R3, T1R3 TR3

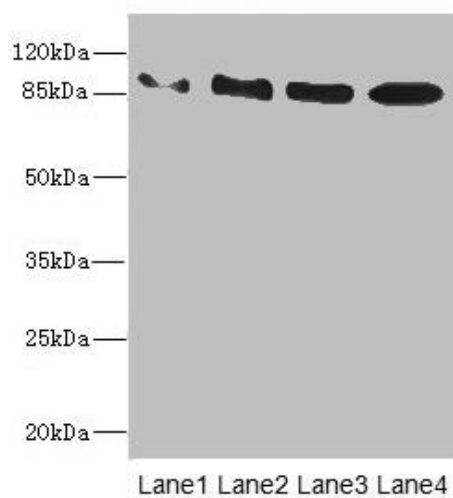
Immunogen:

Recombinant Human Taste receptor type 1 member 3 protein (400-570AA).

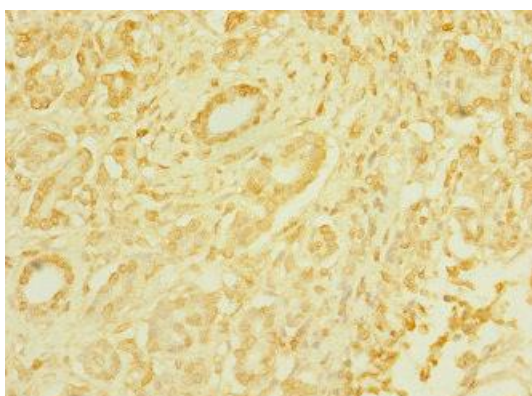
Storage:

PBS with 0.02% sodium azide, 50% glycerol, pH7.3.

Product Images



Western blot. All lanes: TAS1R3 antibody at 1.48 μ g/ml. Lane 1: K562 whole cell lysate. Lane 2: HL60 whole cell lysate. Lane 3: Hela whole cell lysate. Lane 4: HepG2 whole cell lysate. Secondary: Goat polyclonal to rabbit IgG at 1/10000 dilution. Predicted band size: 94 kDa. Observed band size: 94 kDa.



Immunohistochemistry of paraffin-embedded human pancreatic cancer using PACO45482 at dilution of 1:100.