

ROBO2 Antibody



PACO45470

Product Information

Size:

50ul

Reactivity:

Human

Source:

Rabbit

Isotype:

IgG

Applications:

ELISA, IHC

Recommended dilutions:

ELISA:1:2000-1:10000, IHC:1:20-1:200

Protein Background:

Receptor for SLIT2, and probably SLIT1, which are thought to act as molecular guidance cue in cellular migration, including axonal navigation at the ventral midline of the neural tube and projection of axons to different regions during neuronal development.

Gene ID:

ROBO2

Uniprot

Q9HCK4

Synonyms:

Roundabout homolog 2, ROBO2, KIAA1568

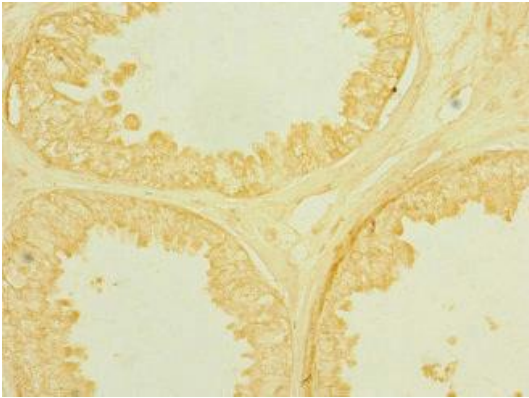
Immunogen:

Recombinant Human Roundabout homolog 2 protein (450-660AA).

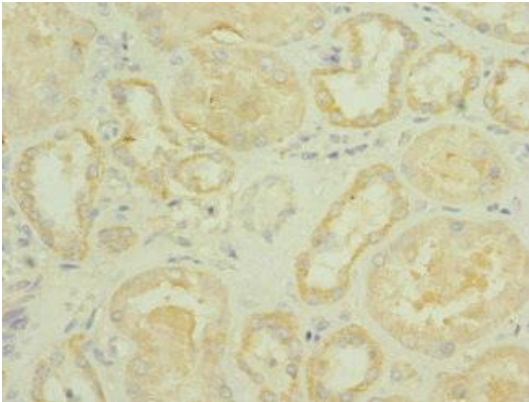
Storage:

PBS with 0.02% sodium azide, 50% glycerol, pH7.3.

Product Images



Immunohistochemistry of paraffin-embedded human prostate cancer using PACO45470 at dilution of 1:100.



Immunohistochemistry of paraffin-embedded human kidney tissue using PACO45470 at dilution of 1:100.