

LY75 Antibody



PACO45455

Product Information

Size:

50ul

Reactivity:

Human, Mouse

Source:

Rabbit

Isotype:

IgG

Applications:

ELISA, WB, IHC

Recommended dilutions:

ELISA:1:2000-1:10000, WB:1:1000-1:5000,
IHC:1:20-1:200

Protein Background:

Acts as an endocytic receptor to direct captured antigens from the extracellular space to a specialized antigen-processing compartment. Causes reduced proliferation of B-lymphocytes.

Gene ID:

LY75

Uniprot

O60449

Synonyms:

Lymphocyte antigen 75 (Ly-75) (C-type lectin domain family 13 member B) (DEC-205) (gp200-MR6) (CD antigen CD205), LY75, CD205 CLEC13B

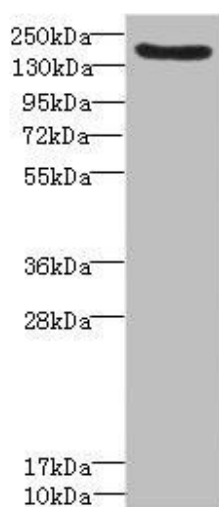
Immunogen:

Recombinant Human Lymphocyte antigen 75 protein (440-680AA).

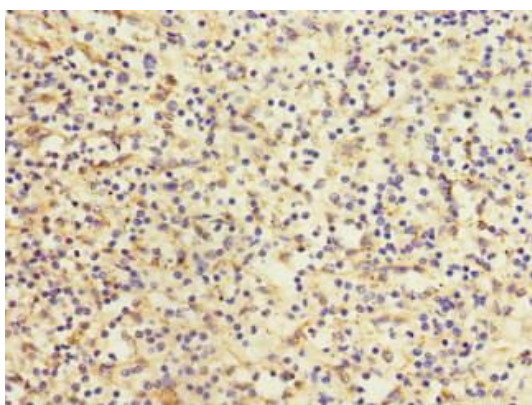
Storage:

PBS with 0.02% sodium azide, 50% glycerol, pH7.3.

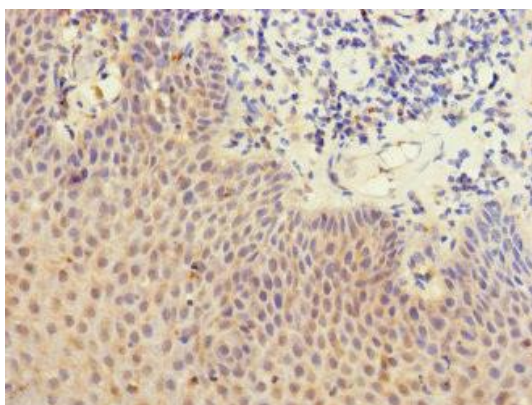
Product Images



Western blot. All lanes: LY75 antibody IgG at 1.57 μ g/ml + Mouse liver tissue. Secondary. Goat polyclonal to rabbit IgG at 1/10000 dilution. Predicted band size: 199, 216, 20, 210 kDa. Observed band size: 199 kDa.



Immunohistochemistry of paraffin-embedded human spleen tissue using PACO45455 at dilution of 1:100.



Immunohistochemistry of paraffin-embedded human tonsil tissue using PACO45455 at dilution of 1:100.