

PACO45422

Product Information

Size:

50ul

Reactivity:

Human

Source:

Rabbit

Isotype:

IgG

Applications:

ELISA, WB, IHC

Recommended dilutions:

ELISA:1:2000-1:10000, WB:1:1000-1:5000,
IHC:1:20-1:200

Protein Background:

After binding acetylcholine, the AChR responds by an extensive change in conformation that affects all subunits and leads to opening of an ion-conducting channel across the plasma membrane.

Gene ID:

CHRNE

Uniprot

Q04844

Synonyms:

Acetylcholine receptor subunit epsilon, CHRNE, ACHRE

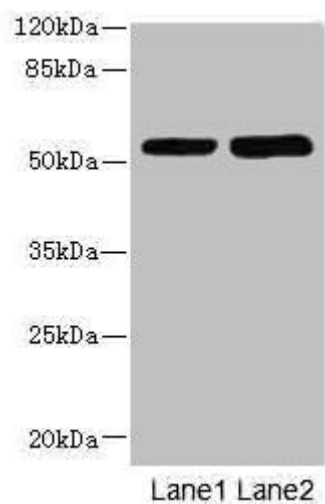
Immunogen:

Recombinant Human Acetylcholine receptor subunit epsilon protein (21-239AA).

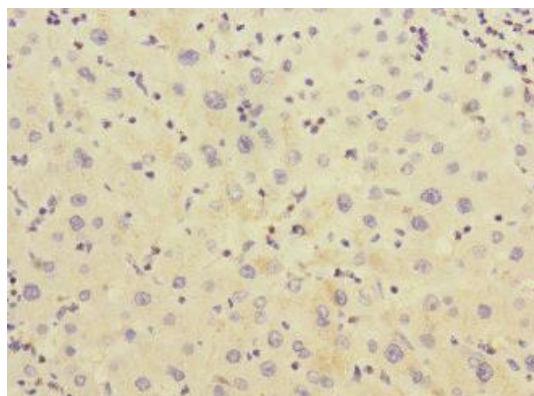
Storage:

PBS with 0.02% sodium azide, 50% glycerol, pH7.3.

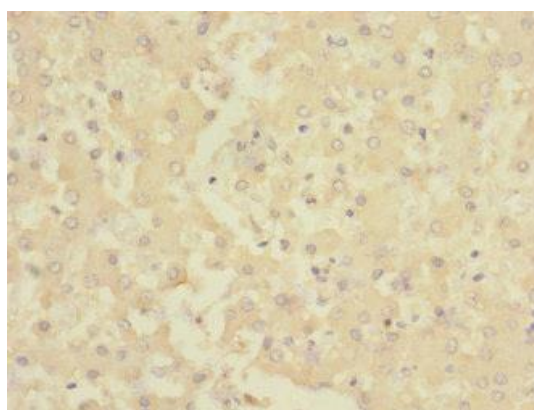
Product Images



Western blot. All lanes: CHRNE antibody at 1.87 μ g/ml. Lane 1: HeLa whole cell lysate. Lane 2: HepG2 whole cell lysate. Secondary: Goat polyclonal to rabbit IgG at 1/10000 dilution. Predicted band size: 55 kDa. Observed band size: 55 kDa.



Immunohistochemistry of paraffin-embedded human liver cancer using PACO45422 at dilution of 1:100.



Immunohistochemistry of paraffin-embedded human liver tissue using PACO45422 at dilution of 1:100.